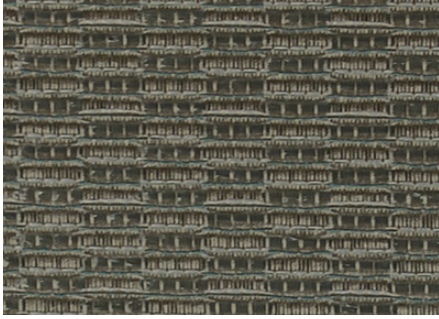


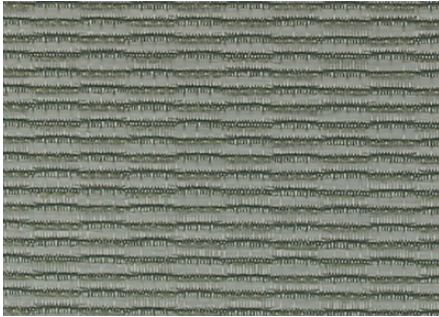
Fret

AS-331-01



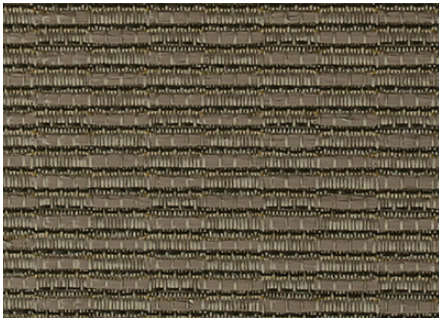
Stagehand

AS-331-02



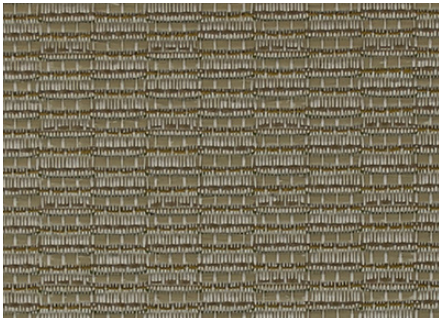
Fired Up

AS-331-03



Fusion

AS-331-04



Wattage

High Performance Woven Textile
Wallcovering • Panel Systems • Partitions

Specifications

Composition: 80% Polyester, 20% Olefin
46% Recycled Content – Repreve®
11% Post-Consumer, 35% Post-Industrial

Weight: 14 oz. per lineal yard

Backing: Acrylic Latex

Width: 54"

Roll Size: 50 Yards

Repeat: Random Match

Environmental

Does Not Contain:

PVC • Chlorine • Plasticizers • Heavy metals
Formaldehyde • Ozone depleting substances
Volatile Organic Compounds (VOC's)
Conserving Natural Resources:

Diverts waste from landfills

Offsets the need to refine new crude oil

Requires less energy to produce

46% Recycled Content – Repreve®
11% Post-Consumer, 35% Post-Industrial

Performance

Abrasion Resistance: (ASTM D-4157-02) 100,000 double rubs

Colorfastness: (AATCC-16A) Passes Class 5.0 / 40 hrs.

Performance Topcoat: Crypton®

Flammability

Tunnel Test: (ASTM E-84) Class A

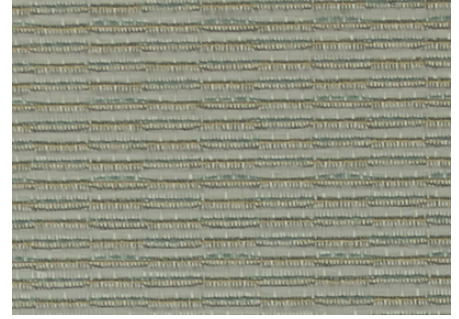
Corner Burn: (UBC 8-2) Passes

Made in the USA



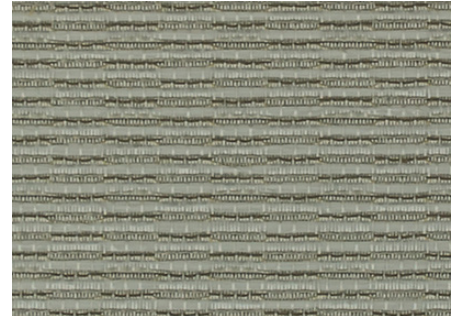
Heavy Metal

AS-331-05



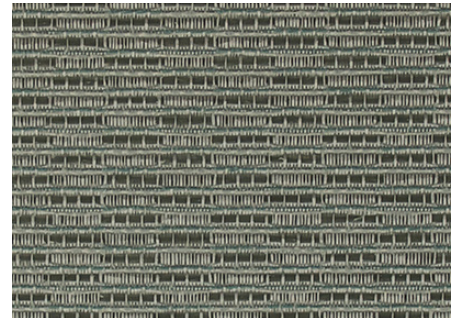
Platinum

AS-331-06



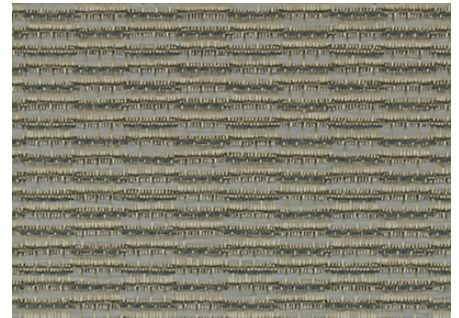
Ampp

AS-331-07



Feedback

AS-331-08





Platinum

AS-331-06

Acoustic Solutions Wattage

High Performance Woven Textile
Wallcovering • Panel Systems • Partitions

Treated with Crypton® performance top coat.



surfacematerials

The ultimate in interior finish products.

(440) 248-0000

6655 parkland boulevard
solon, ohio 44139
(440) 519-1950 fax
www.surfacematerials.com