



de
nōvō[®] WALL

SHIMA TRELLIS™



DN2-STR-01 Kabri Pottery



DN2-STR-02 Almond Biscuit



DN2-STR-03 Montauk Pongee



DN2-STR-04 Ecu Flax



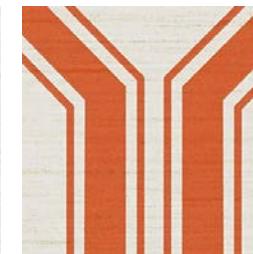
DN2-STR-05 Ecu Dovetail



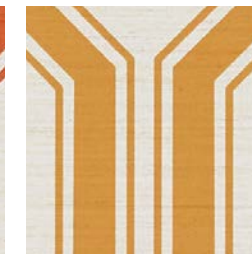
DN2-STR-06 Salt Haze Shadow



DN2-STR-07 Lucent Sanctuary



DN2-STR-09 Montauk Lobster Roll



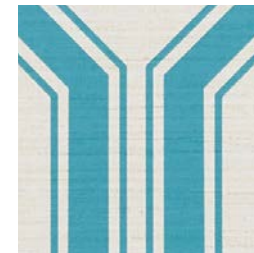
DN2-STR-10 Montauk Clementine



DN2-STR-11 Montauk Daisy



DN2-STR-12 Montauk Lawn Club



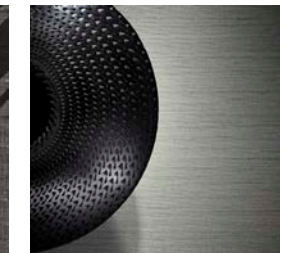
DN2-STR-13 Montau South Shore



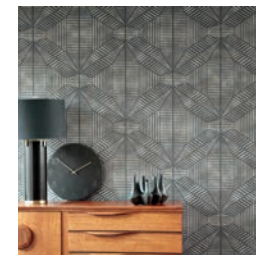
DN2-STR-14 Montauk Tar



DN2-STR-15 Tar Black



FOR SHIMA TEXTURE
CLICK HERE



FOR SIMILAR TEXTURES
CLICK HERE

Type II 20 oz | Width: 54" | Backing: Non-Woven | Match: Reversible Straight Across Match
Repeat 6.5"H x 12" V | Fire Rating: Class A | Flame Spread: 25 | Smoke Development: 30

[CLICK COLOURS](#)

[CLICK SAMPLES](#)

[CLICK SPECS](#)

[CONTACT US](#)

AQUA-CLEAR
Water Based Topcoat

 **surface** materials
The ultimate in interior finish products.

A Colour & Design Inc. Company.
Copyright 2015. All Rights Reserved.
Any copying or other use is expressly prohibited.
Made in the U.S.A.