



# Playlist

## High Performance Woven Textile

### Wallcovering • Panel Systems • Partitions

#### Specifications

**Composition:** 96% Polyester, 4% Metalized Polyester Yarn  
Up to 96% Post-Industrial Content  
(Varies by Color, Minimum 62%)  
**Weight:** 13 oz. per lineal yard  
**Backing:** Acrylic Latex  
**Width:** 54"  
**Roll Size:** 50 Yards  
**Repeat:** Random Match

#### Performance

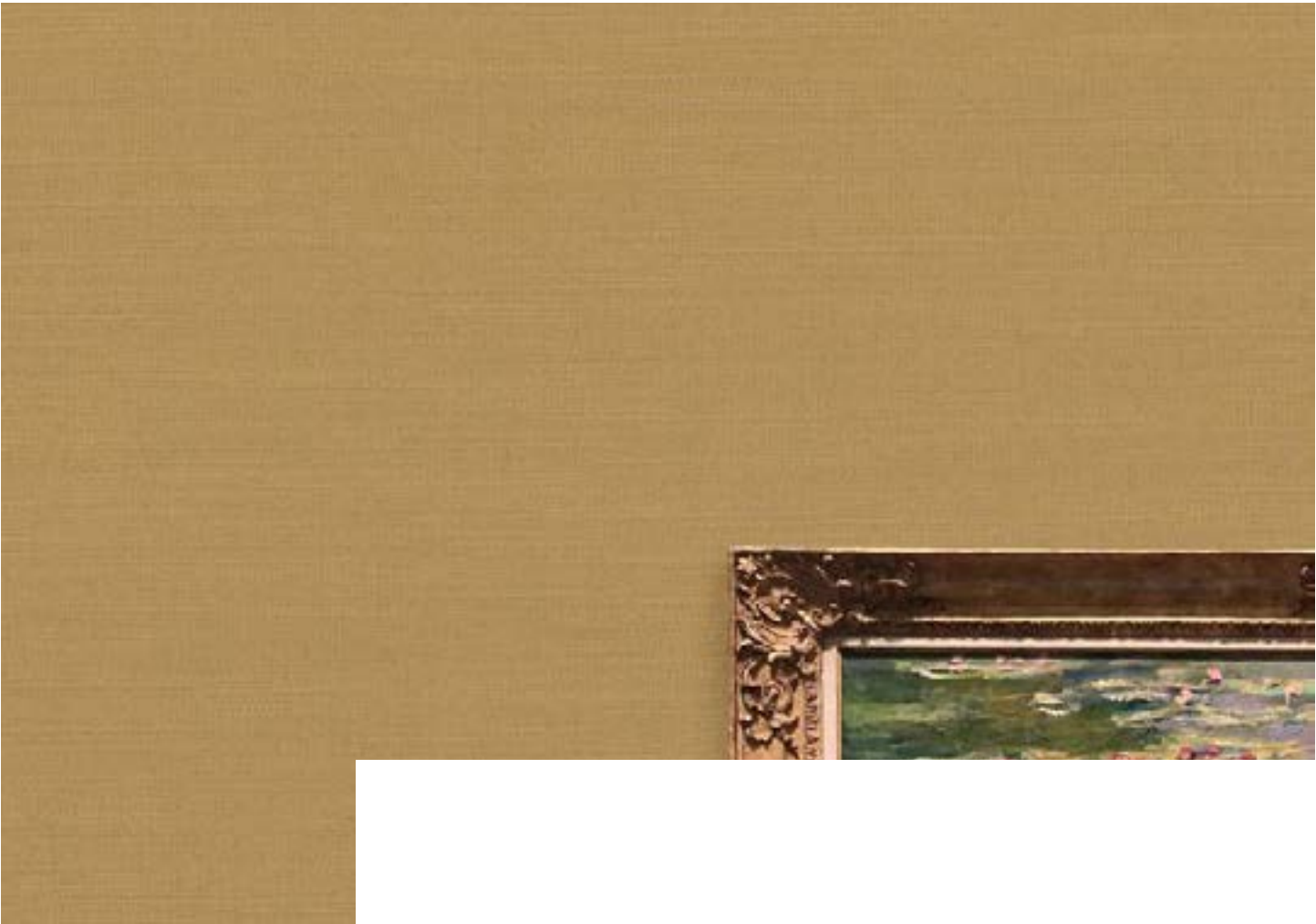
**Abrasion Resistance:** (ASTM D-4157) 51,000 double rubs  
**Colorfastness:** (AATCC-16A) Exceeds Class 4.0 / 40 hrs.  
**Performance Topcoat:** Stain Guard

#### Environmental

Does Not Contain:  
PVC • Chlorine • Plasticizers • Heavy metals  
Formaldehyde • Ozone depleting substances  
Volatile Organic Compounds (VOC's)  
Conserving Natural Resources:  
Diverts waste from landfills  
Offsets the need to refine new crude oil  
Requires less energy to produce  
Up to 96% Post-Industrial Content  
(Varies by Color, Minimum 62%)

#### Flammability

**Tunnel Test:** (ASTM E-84) Class A  
**Corner Burn:** (UBC 8-2) Passes



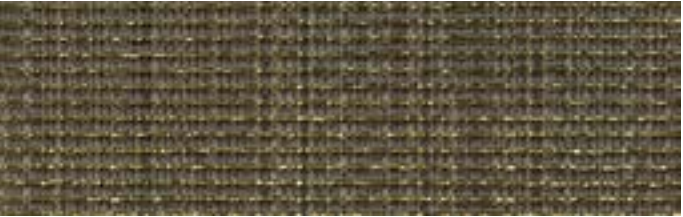
ArtistAS-311-01



GenreAS-311-03



TuneAS-311-05



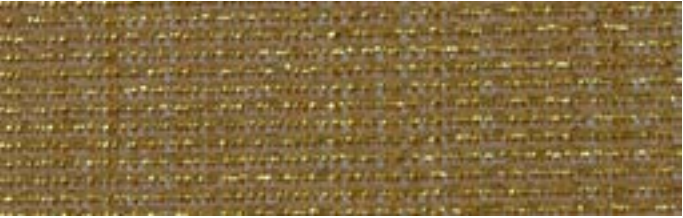
RewindAS-311-07



SongAS-311-09



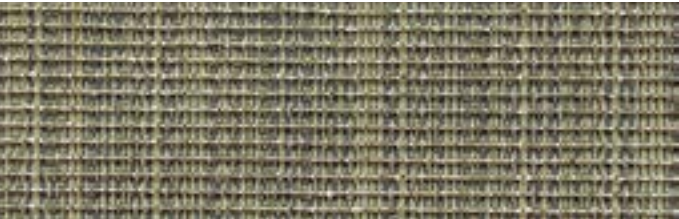
PlayAS-311-11



PauseAS-311-13



Fast ForwardAS-311-02



ShuffleAS-311-04



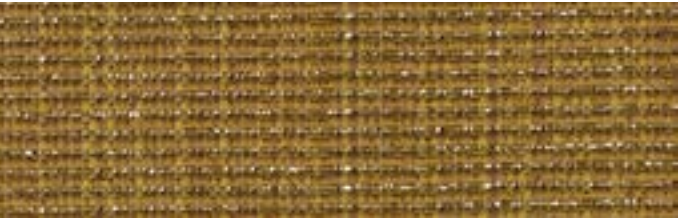
RepeatAS-311-06



AlbumAS-311-08



SkipAS-311-10



StopAS-311-12