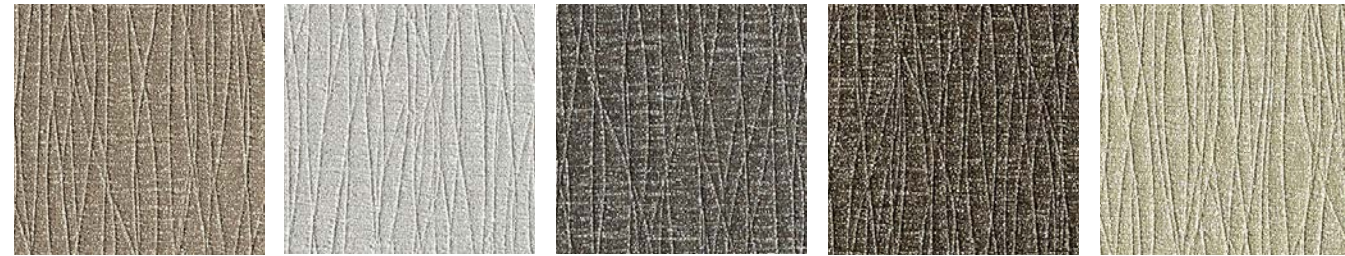




DN2-JEM-01 High Beam DN2-JEM-02 Sugar Coat DN2-JEM-03 New Taupia DN2-JEM-04 Mirror Mirror DN2-JEM-05 Silver Threads



DN2-JEM-06 Mica Stone DN2-JEM-07 Frost DN2-JEM-08 Black Opal DN2-JEM-09 Pyrite DN2-JEM-10 Candlebark



DN2-JEM-11 Shimmer DN2-JEM-12 Taj Mahal DN2-JEM-13 Sandcastle DN2-JEM-14 Soleil Gold DN2-JEM-15 Corn silk



DN2-JEM-16 Indulgence DN2-JEM-17 Panela DN2-JEM-18 Radiant [FOR SIMILAR TEXTURES CLICK HERE](#)

Type II 20 oz | Width: 52"/54" | Backing: Osnaburg | Match: Random Match Reversible Pattern
Repeat 27"H x 24" V | Fire Rating: Class A | Flame Spread: 25 | Smoke Development: 45

[CLICK COLOURS](#)

[CLICK SAMPLES](#)

[CLICK SPECS](#)

[CONTACT US](#)