

# Hexad

Fabric

An acoustical panel design with six (6) sides that offers endless designs for any wall space. Providing thicknesses of 1" and 2", crisp angles, and vibrant colors, our Hexad series can create that modern experience with extensive flexibility.

## Don't Mess with A Good Thing, Perfect It.

Meticulously crafted like your future depends on it, because it does.

### Your Products & Our Purpose

Craft purposeful and beautiful acoustically absorbent products that help designers and builders easily create spaces that enable people to connect and be at their best.



UNMATCHED  
PRODUCT  
BREADTH

Made in the USA



At the foothills of the  
Rocky Mountains

**VACU-  
BOND®**

FOR SMOOTHER SURFACES  
AND CLEANER CORNERS

**2X**

FASTER THAN  
THE COMPETITION

COLLABORATIVE DESIGN  
**sonus**  
CUSTOM SHOP  
RESEARCH & DEVELOPMENT

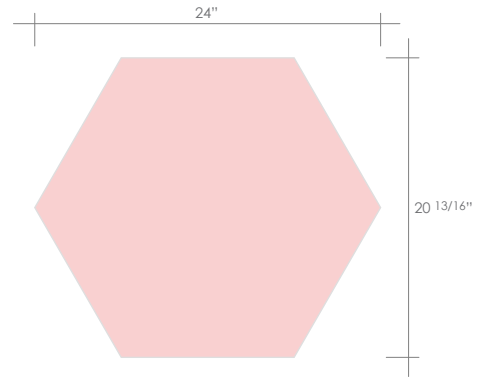
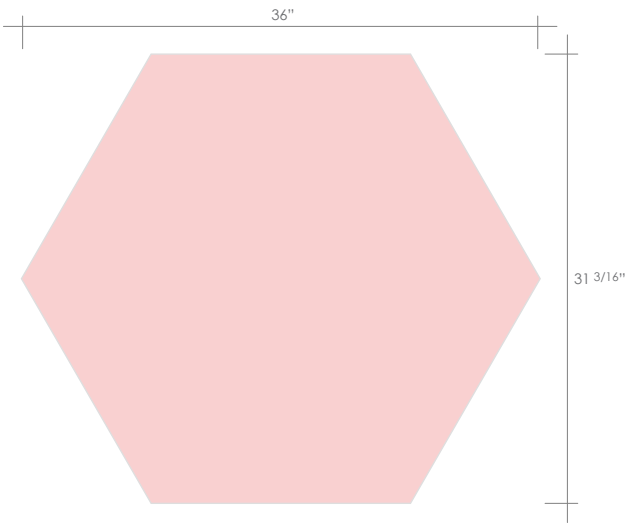


START TO FINISH  
UP-TO-THE-SECOND  
ORDER TRANSPARENCY

# Specifications

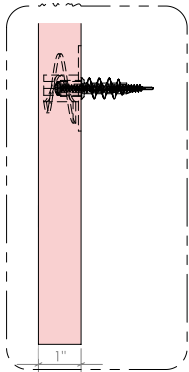
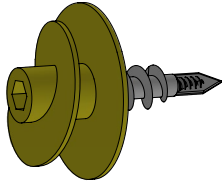
<b>Product Name</b>	Fabric Hexad Panel
<b>Content</b>	6–7lb fiberglass board with optional tackable & high-impact resistant facers, 100% post-consumer recycled polyester fabric
<b>Thickness</b>	1", 2", and 3"
<b>Unit Width</b>	24" and 36" (custom sizes available)
<b>Unit Height</b>	21" and 31" nominal – see drawings for details (custom sizes available)
<b>Weight</b>	1" = .8 lbs/sq ft, 2" = 1.5 lbs/sq ft
<b>Edge Options</b>	Square or Beveled
<b>Sound Performance</b>	ASTM C423-17: NRC 1" = 0.83 and 2" = 1.03
<b>Fire Performance</b>	ASTM 84 Class A
<b>Environmental</b>	Low VOC emissions, woven fabrics are FR (Flame Retardant) free and compliant with CAL AB 2998.
<b>Maintenance</b>	Vacuum to remove any loose dirt or dust. You may use a soft or plastic bristle brush to loosen it. Avoid excess pressure. Compressed air can also be used to dust the material in difficult or large installations. Remove ordinary dirt and smudges with a mild soap and water solution and a clean, soft cloth or towel. Dry with a soft lint-free cloth or towel. A melamine magic eraser can be used for more difficult stains. Always apply any cleaning methods to a small area first to test effectiveness and result.
<b>Warranty</b>	5 years
<b>Unit of Sale</b>	Per square foot

# Designs

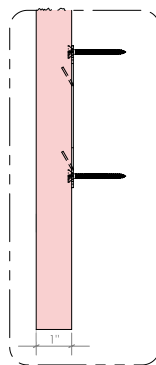


# Hardware

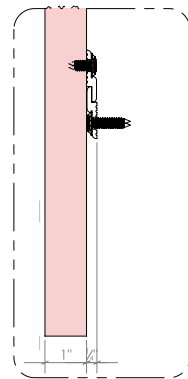
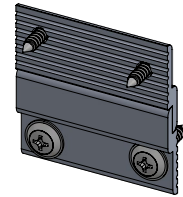
Snap-on Anchor



Impaler



Z Clip



# Colors

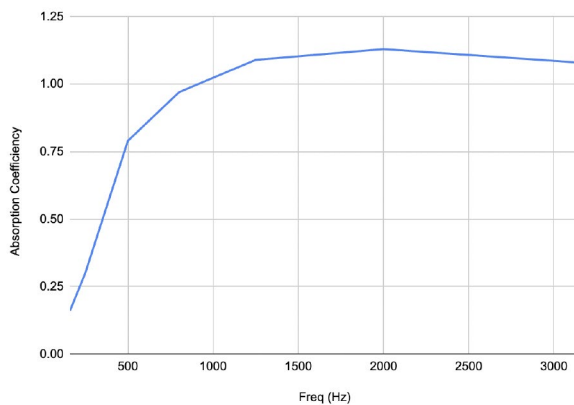
We currently offer over 40 standard colors thanks to our partnership with Burch. See our Standard Fabrics document on the next page for a complete listing.

We also carry a wide array of other acoustic fabrics and colors by Guilford of Maine, Knoll, Maharam, and more.

## Test Results

### 1" Fabric Flat Panel

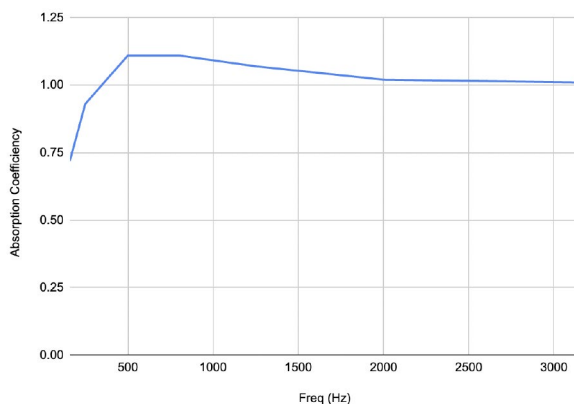
Absorption Coefficiency vs. Freq (Hz)



Freq (Hz)	Absorption Coefficiency
160	0.16
250	0.30
500	0.79
800	0.97
1250	1.09
2000	1.13
3150	1.08
<b>NRC</b>	<b>0.83</b>

### 2" Fabric Flat Panel

Absorption Coefficiency vs. Freq (Hz)



Freq (Hz)	Absorption Coefficiency
160	0.72
250	0.93
500	1.11
800	1.11
1250	1.07
2000	1.02
3150	1.01
<b>NRC</b>	<b>1.03</b>

The Noise Reduction Coefficiency (NRC) is calculated as the arithmetic average of the absorption coefficients in the shaded bands only (250, 500, 1250 & 2000 Hz).

ASTM C 423-17: The specimens were tested in a Type A mounting, as defined by ASTM Practice B 795-05. Specimens were placed directly on the reverb room floor. The specimens had a 1" aluminum frame butted against them with the frame duct taped to the floor.



## Prime Time



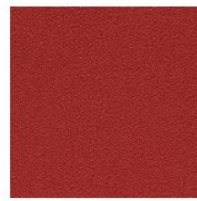
Tangerine



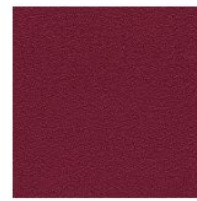
Paprika



Shiraz



Scarlet



Fuchsia



Violet



Admiral



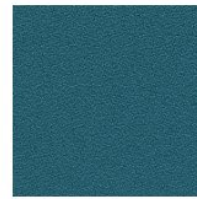
Marina



Azure



Peacock



Tropic



Chambray



Aloe



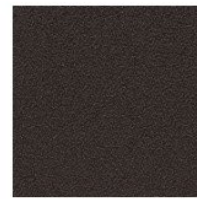
Key Lime



Spring



Spruce



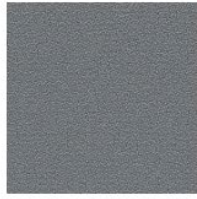
Brownie



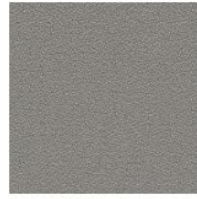
Jet Black



Shale



Elephant



Cinder



Parchment



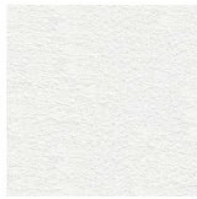
Mink



Sterling



Chino



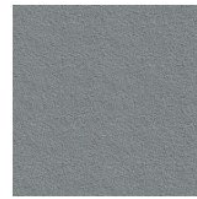
Lunar



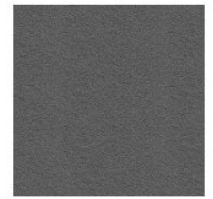
Stucco



Silverado



Shark



Granite



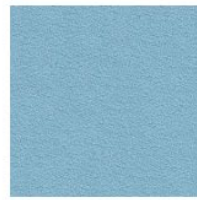
Academy



Cerulean



Bluestone



Delft



Lichen



Shamrock



Fairway



Ray



Copper



Woodrose



Bloom



Printable