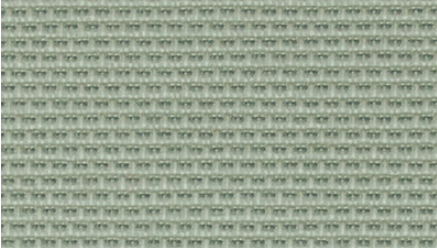


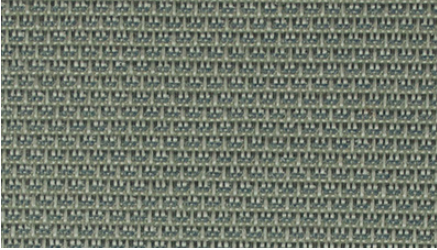
Concerto

AS-131-01



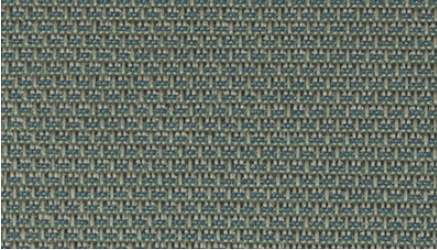
Mambo

AS-131-02



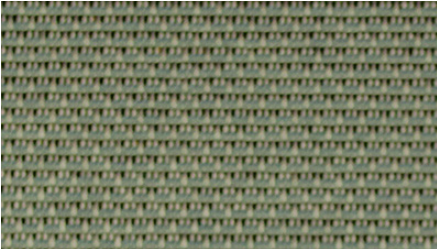
Bohemian

AS-131-03



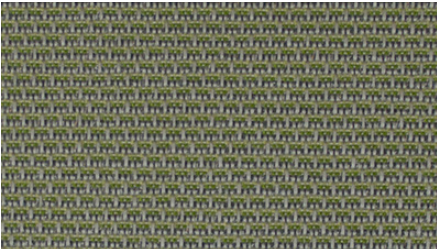
Overture

AS-131-04



Marimba

AS-131-05



Harmony

High Performance Woven Textile
Wallcovering • Panel Systems • Partitions

Specifications

Composition: 80% Polyester, 20% Olefin
20% Recycled Content – Repreve®

20% Post-Industrial (Olefin)

Weight: 18 oz. per lineal yard

Backing: Acrylic Latex

Width: 54"

Roll Size: 50 Yards

Repeat: Random Match

Environmental

Does Not Contain:

PVC • Chlorine • Plasticizers • Heavy metals
Formaldehyde • Ozone depleting substances

Volatile Organic Compounds (VOC's)

Conserving Natural Resources:

Diverts waste from landfills

Offsets the need to refine new crude oil

Requires less energy to produce

20% Recycled Content – Repreve®

20% Post-Industrial (Olefin)

Performance

Abrasion Resistance: (ASTM D-4157-02) 100,000 double rubs

Colorfastness: (AATCC-16A) Passes Class 5.0 / 40 hrs.

Performance Topcoat: Crypton®

Flammability

Tunnel Test: (ASTM E-84) Class A

Corner Burn: (UBC 8-2) Passes

Made in the USA



Rhapsody

AS-131-06



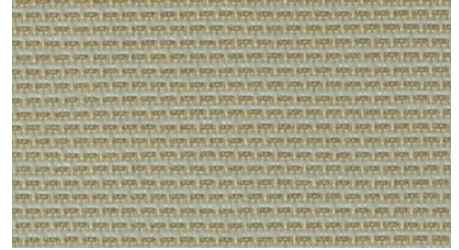
Two Step

AS-131-07



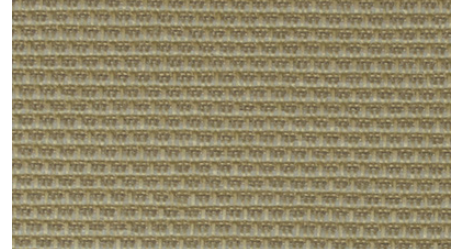
Prelude

AS-131-08



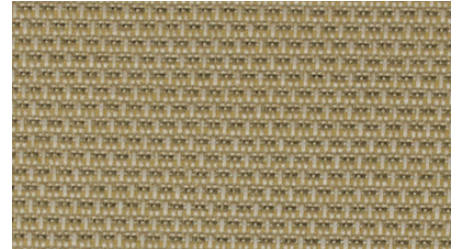
Melody

AS-131-09



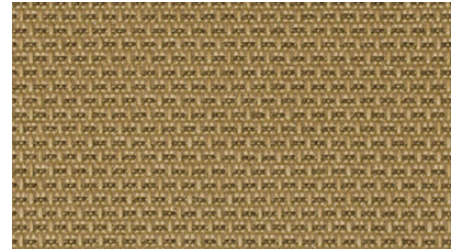
Interlude

AS-131-10



Jazz

AS-131-11





Concerto

AS-131-01

Acoustic Solutions Harmony

High Performance Woven Textile Wallcovering
• Panel Systems • Partitions

Treated with Crypton® performance top coat.



surfacematerials

The ultimate in interior finish products.

(440) 248-0000

6655 parkland boulevard
solon, ohio 44139
(440) 519-1950 fax
www.surfacematerials.com