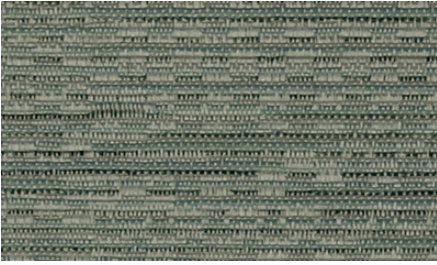


Amplifier

AS-031-01



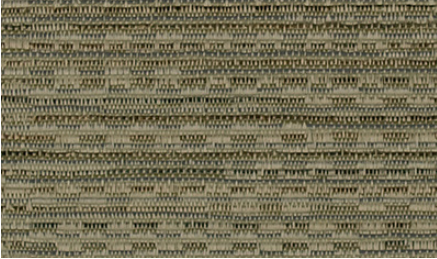
Velocity

AS-031-02



Signal

AS-031-03



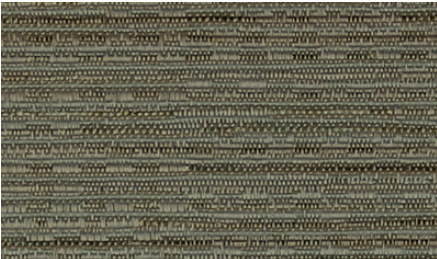
Frequency

AS-031-04



Circuit

AS-031-05



Radar

AS-031-06



Receiver

AS-031-07



Channel

AS-031-08



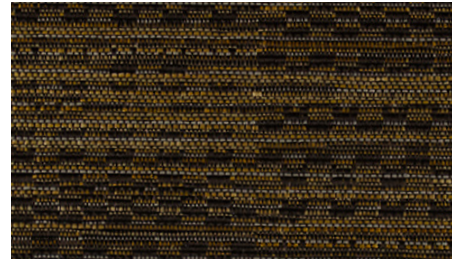
Transmitter

AS-031-09



Echo

AS-031-10



Feedback

High Performance Woven Textile
Wallcovering • Panel Systems • Partitions

Specifications

Composition: 100% Polyester
85% Recycled Content – Repeve®
30% Post-Consumer, 55% Post-Industrial
Weight: 16 oz. per lineal yard
Backing: Acrylic Latex
Width: 54"
Roll Size: 50 Yards
Repeat: Random Match

Environmental

Does Not Contain:
PVC • Chlorine • Plasticizers • Heavy metals
Formaldehyde • Ozone depleting substances
Volatile Organic Compounds (VOC's)
Conserving Natural Resources:
Diverts waste from landfills
Offsets the need to refine new crude oil
Requires less energy to produce
85% Recycled Content – Repeve®
30% Post-Consumer, 55% Post-Industrial

Performance

Abrasion Resistance: (ASTM D-4157-02) 100,000 double rubs
Colorfastness: (AATCC-16A) Passes Class 5.0 / 40 hrs.
Performance Topcoat: Crypton®

Flammability

Tunnel Test: (ASTM E-84) Class A
Corner Burn: (UBC 8-2) Passes

Made in the USA



surface
materials



Receiver

AS-031-07

Acoustic Solutions Feedback

High Performance Woven Textile
Wallcovering • Panel Systems • Partitions

Treated with Crypton® performance top coat.