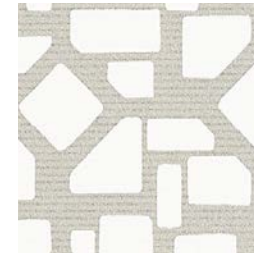




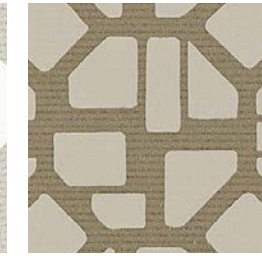
DN2-OCK-01

Elfreth



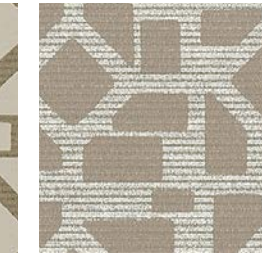
DN2-OCK-02

Crown Glass



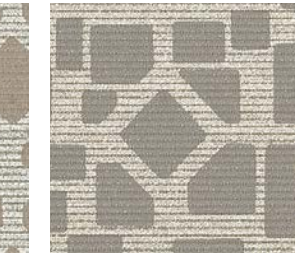
DN2-OCK-03

Rue de Barres



DN2-OCK-04

Cobblestone



DN2-OCK-05

Kaleidoscope



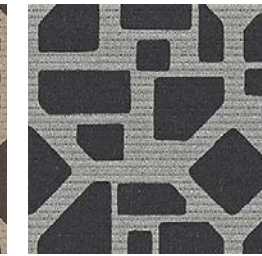
DN2-OCK-06

Red Rock



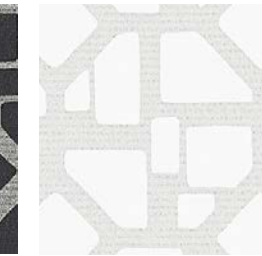
DN2-OCK-07

Acorn Street



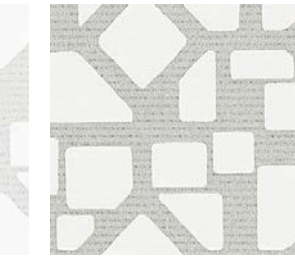
DN2-OCK-08

Negative Space



DN2-OCK-09

Hopscotch



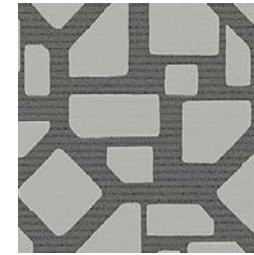
DN2-OCK-10

Post Alley



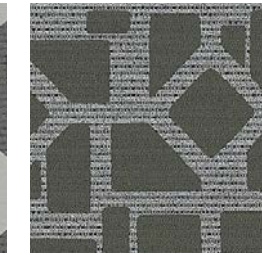
DN2-OCK-11

Bardstown



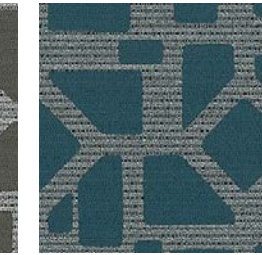
DN2-OCK-12

Belgian Block



DN2-OCK-13

Laclede



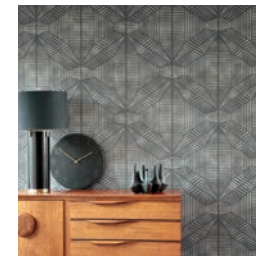
DN2-OCK-14

Wharf



DN2-OCK-15

South Bend Landing



FOR SIMILAR TEXTURES  
CLICK HERE

Type II 20 oz | Width: 52"/54" | Backing: Osnaburg | Match: Non-Reversible Straight Across Match  
Repeat 54"H x 21" V | Fire Rating: Class A | Flame Spread: 15 | Smoke Development: 15

[CLICK COLOURS](#)

[CLICK SAMPLES](#)

[CLICK SPECS](#)

[CONTACT US](#)