

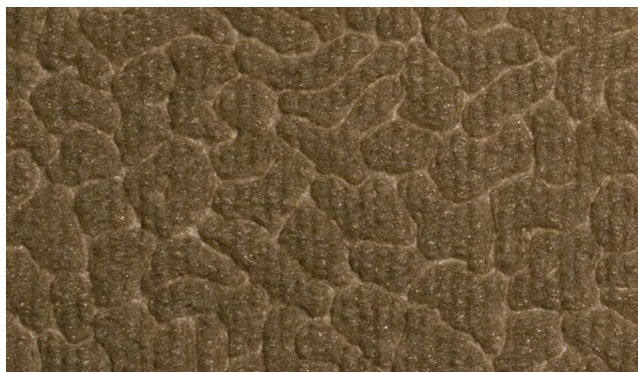
Pearl AS-424-01



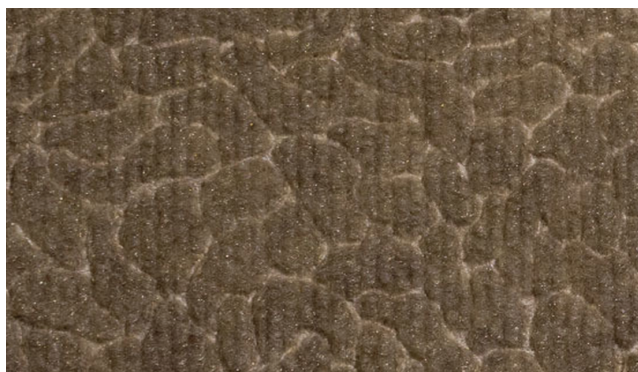
Flax AS-424-02



Thatch AS-424-03



Sisal AS-424-04



Mineral AS-424-05



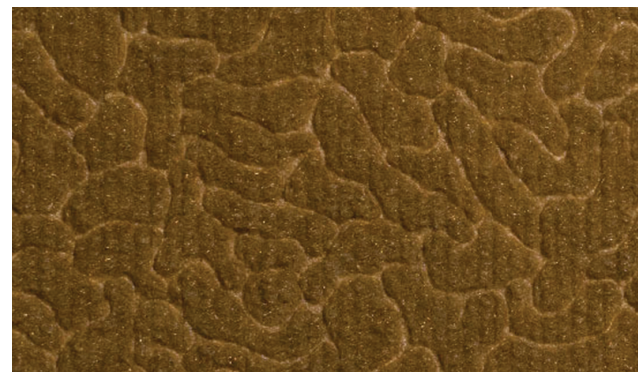
Cream AS-424-06



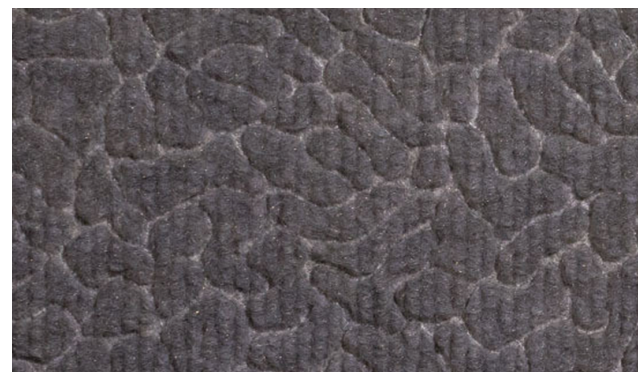
Cane AS-424-07



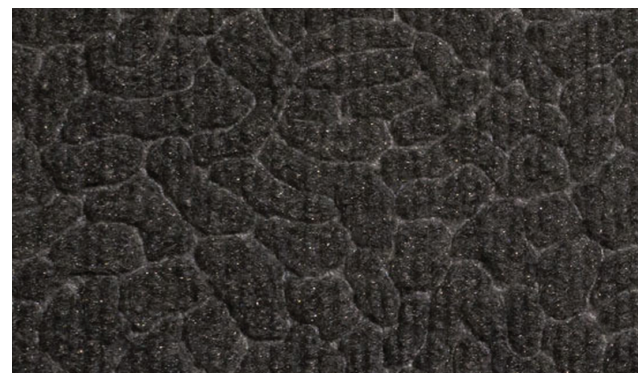
Saddle AS-424-08



Flint AS-424-09



Smoke AS-424-10



# Acoustic Wall Crackle

Acoustic Recycled Textile  
Wallcovering • Panels • Exhibits • Partitions

## Specifications

**Composition:** Eco-fi® Post-Consumer Solution Dyed Recycled Fiber  
100% Recycled Content from Water & Soda Bottles.

Averages 90% Post-Consumer Content

**Weight:** 24 oz. face weight

**Backing:** Fused Polyester

**Width:** 54"

**Roll Size:** 33 Yards

**Repeat:** Random Match

## Environmental

80 Bottles = 1 Yard Acoustic Wall Crackle

Does Not Contain:

PVC • Chlorine • Plasticizers • Heavy metals

Formaldehyde • Ozone depleting substances

Volatile Organic Compounds (VOC's)

Conserving Natural Resources:

Diverts waste from landfills

Offsets the need to refine new crude oil

Requires less energy to produce

UL Environmental: the only acoustical fabric to carry the UL label

Eco-fi® Post-Consumer Solution Dyed Recycled Fiber

100% Recycled Content from Water & Soda Bottles.

Averages 90% Post-Consumer Content

## Performance

**Abrasion Resistance:** (ASTM D-4158)

Full Commercial Serviceability

**Antimicrobial Technology:** FDA cleared Fosshield®

**Colorfastness:** (AATCC-16A) Passes Class 5.0 / 40 hrs.

**Acoustical Qualities:** (ASTM C423) NRC rating .25

Velcro compatible, pill resistant

## Flammability

**Tunnel Test:** (ASTM E-84) Class A

**Corner Burn:** (NFPA 265) Passes

**UL Classification:** Flame Spread 15; Smoke Developed 85

**Made in the USA**



surface  
materials



## **Acoustic Solutions**

# **Acoustic Wall Crackle**

**Acoustic Recycled Textile**  
**Wallcovering • Panels • Exhibits • Partitions**

Premium acoustic fabric created from 100% recycled content.



6655 parkland blvd.  
solon, ohio 44139  
(440) 248-0000  
[www.surfacematerials.com](http://www.surfacematerials.com)