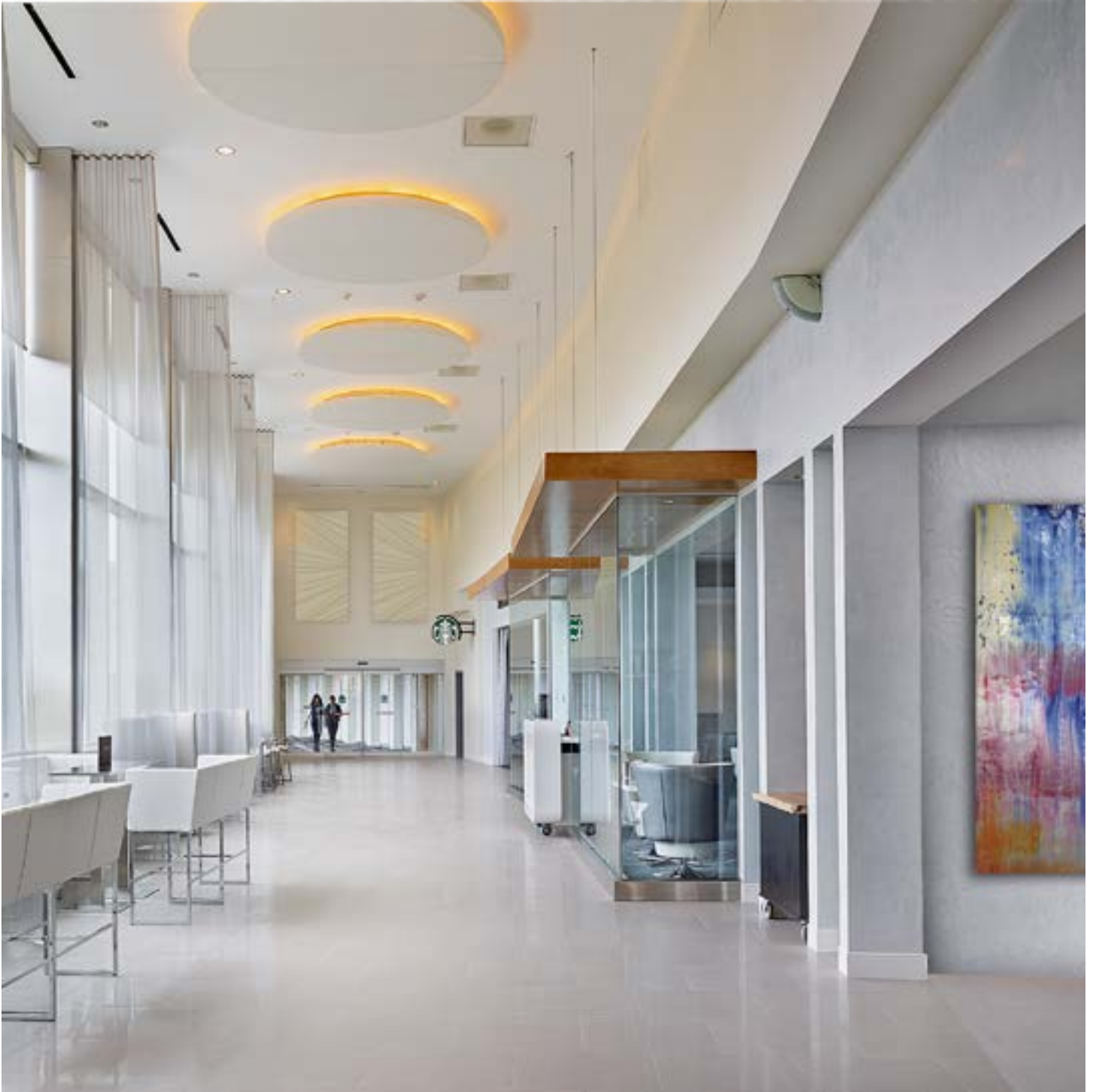


Acoustic Solutions

Your Single Source for Acoustic Solutions including:

Flat Panels | Baffles | Clouds | Dimensional Art Panels | Diffusers | Direct to Drywall Textiles

Acoustic Solutions offers a wide array of acoustical products designed to control sound in any space.



Acoustic Solutions Patterns and Guidelines

Perforated SanFoot Wood
Wrapped Baffles



Surface Materials Acoustic Solutions panels are manufactured utilizing 56% post consumer recycled content and are dimensionally stable with a Class A fire rating. To eliminate fabric sag or puckering, ensure longevity and exceptional quality, the fabric is bonded with acoustically transparent and mold resistant adhesive to the face, all edges and a full 2" on the back of the panel.

Panel Types



Flat Panels (AFLT)

Flat Tackable Wall Panels (ATAC)

Flat High Impact Resistant Wall Panels (AHIG)

Use where high sound absorption is needed.

Mounting: Rotofast anchors, rotofast lollipop anchors, impaling clips or z-clips.

Sizes: Standard Panels up to 4'x8', custom available in any size

Available Thicknesses: 1", 2", 3", 4"

NRC: .80 - 1.05

**Can be fabric (using our acoustic solutions or COM) or wood wrapped*



Dimensional Acoustic Panel Art (ADIM)

Logos and Custom Designs (ACUS)

Dimensional Acoustic Art Panels and Custom Logos and Designs provide excellent noise absorption combined with high style & design.

Mounting: Rotofast anchors, rotofast lollipop anchors, impaling clips or z-clips.

Sizes: Standard Panels up to 4'x8', custom available in any size

Available Thicknesses: 1", 2", 3", 4"

NRC: .85- 1.05

See pages 10 - 17 for color and design options

** Wrapped in Sound Wave Fabric, see page 18*

Panel Types



Acoustic Digital Art Panels

Incorporate beautiful and functional acoustical artwork into your space. Use your own art or choose one of our leVel patterns. Our custom art panels create ambiance and mood while absorbing excess noise and sound. The digital design is printed using dye sublimation and has custom tailored edges and corners with a fiber-glass core and hardened edges for stability.

Mounting: Rotofast anchors, rotofast lollipop anchors, impaling clips or z-clips.

Sizes: Standard Panels up to 4'x8', custom available in any size

Available Thickness: 1", 2", 3", 4"

NRC: .80- 1.05



Diffuser Panels (ADIF)

Diffuser panels provide excellent noise absorption qualities of lower frequencies of sound (bass). Diffusers are commonly used in music rooms and theaters. Unlike normal triangular or barrel-shaped diffusers, our panels are specially fabricated to provide the same function within a flat aesthetically pleasing panel.

Mounting: Rotofast anchors, rotofast lollipop anchors, impaling clips or z-clips.

Sizes: Standard Panels up to 4'x8', custom available in any size

Available Thickness: 1", 2", 3", 4"

** Can be fabric or wood wrapped*



Clouds (ACLD)

The most common application of these panels are in conference rooms, cafeterias, corridors, gymnasiums, natatoriums, restaurants and other open ceiling areas. Cloud panels provide excellent noise absorption qualities.

Mounting: Rotofast anchors, rotofast lollipop anchors

Sizes: Standard Panels up to 4'x8', custom available in any size

Available Thickness: 1", 2", 3", 4"

NRC: 1.0 + (please discuss with sales person for more information)

** Can be fabric or wood wrapped*



Baffles (ABAF)

Baffles provide excellent noise absorption qualities and are commonly used in conference rooms, cafeterias, corridors, gymnasiums, natatoriums, restaurants and other open ceiling areas.

Mounting: Hardware included, installer is responsible for hanging material

Sizes: Standard Panels up to 4'x8', custom available in any size

Available Thickness: 2", 4"

NRC: 1.0

** Can be fabric or wood wrapped*

Panel and Direct to Drywall Fabrics



Textile Direct to Drywall
Our high performance woven textiles are inherently quieter than paint and create a softer and quieter feel in your space. Textiles can also be used to wrap panels, partitions, and operable walls.

See pages 20 - 43 for color and design options



Acoustic Recycled Textile Direct to Drywall
Our acoustic recycled textiles can be placed directly on to drywall to achieve an NRC from .17 - .25 and can also be placed on flat panels, clouds, baffles, partitions, and operable walls.
Composition: 100% recycled fiber content from water and soda bottles.
Weight: 24 oz. face weight
Backing: Fused Polyester
Width: 54"

See pages 44-59 for color and design options

Examples of our most popular patterns. Visit our website for more colors and patterns.

Direct to Drywall Digital Acoustics



Digitally Printed Textile Direct to Drywall
Sibilance features Antimicrobial Technology that incorporates silver and copper ions into the polyester fiber to naturally attack microbes. Using Sibilance direct to drywall will provide an NRC of .20.

- **Custom** Acoustic Wallcovering on Sibilance® using our level designs visit www.surfacematerials.com for leVel patterns or your own art.
- **Standard** Repeat Acoustical Wallcovering on Sibilance® is our most affordable solution and sold by the yard. Hangs just like regular wallcovering.

See pages 7 & 8 for standard color and design options

Standard Repeat Acoustical Wallcovering Patterns:

Cathedral Grain



LSAW007-03 Cathedral Grain - Honey Maple



LSAW007-06 Dark Walnut LSAW007-07 Ebony

Brick Wall



LSAW005-01 Brick Wall - White



LSAW005-01 Brick Wall - White



LSAW005-02 Brick Wall - Sandstone



LSAW005-03 Brick Wall - Burnt Clay

Wood Chevron



LSAW006-01 Wood Chevron - Sunbleached



LSAW006-01 Wood Chevron - Sunbleached



LSAW006-02 Wood Chevron - Aged



LSAW006-03 Wood Chevron - Black

Living Wall



LSAW001-02 Living Wall - Lindsey II



LSAW001-01 Living Wall - Alpine Moss



LSAW001-02 Living Wall - Lindsey II



LSAW001-03 Living Wall - Magnolia



LSAW001-04 Living Wall - Moss Brick

Examples of our most popular standard repeat patterns. Visit our website for more colors and patterns.



Surface Materials also provides wood veneer wrapped panels. Pictured below are SanFoot: Sapele Quarter Cut wood wrapped clouds.

How to Specify Acoustic Solutions Products:

1. Identify the target needs of the space:

- Size of space
- Type of space
- Ceiling height and type
- Flooring type
- What is your vision of the space?
- Is it loud, medium or quiet?
- What is the typical number of occupants using the space?

2. Determine performance requirements for your space:

- Noise Reduction Coefficient (NRC) = Acoustical performance
- NRC Guide: Flat Panel Thickness. 1" = .80 NRC value. 2" = 1.00 NRC value
- NRC Guide: Dimensional Panel Thickness. 1" = .85 NRC value. 2" = 1.05 NRC value
- Fire rating ASTM E 84 Class A
- Formaldehyde Free
- Mold and mildew resistant

3. Select your product type(s) based on look and performance required:

- Flat Traditional Acoustical Panels
- Dimensional Acoustic Art Panels
- Baffles
- Clouds
- Diffusers
- High impact Acoustic Panels
- Tackable Acoustic Panels
- Logo Panels

4. Select fabric finish from Acoustic Solutions Box:

- Dimensional Acoustic Art Panels must use Sound Wave fabric
- Other panels can be constructed in any Acoustic Solutions Box fabric

5. Select mounting method:

- Roto fast anchors
- Impaling clips
- Z-Clips and Z-Bar

6. Submit to your Acoustic Solutions provider:

- Your provider will help with the panel layout, quantity, quoting and specification information



Dimensional Art Panels

Examples of our most popular patterns. Visit our website for more colors and patterns.

Steps

805



Swirl

811



Examples of our most popular patterns. Visit our website for more colors and patterns.

Aspen Leaves

841



Silhouettes

807-1



Examples of our most popular patterns. Visit our website for more colors and patterns.

Waves

810



Currents

826



Examples of our most popular patterns. Visit our website for more colors and patterns.

Sand Dunes

821



Dunes

820



Sound Wave

Acoustically Transparent Textile



*Sound wave is used to wrap all dimensional art panels and can be used, along with our acoustic textiles, to wrap flat acoustic panels.

Specifications

Composition: 100% Polyester
Backing: None
Width: 66"
Repeat: None
Cleaning: Vacuuming or Light Brushing

Performance

Colorfastness to Light: (AATCC 16.3 Option 3) Grade 4 Minimum / 40 hrs.
Colorfastness to Crocking: (AATCC 8) Grade 4 Minimum Dry / Grade 3 Minimum Wet

Flammability

Tunnel Test: (ASTM E-84) Class A

White AS-100-2664	Pool AS-100-2842	Deep Water AS-100-2051	Fern AS-100-2840	Lemon AS-100-2839	Pumpkin AS-100-2021	Geranium AS-100-2084
Chicory AS-100-1205	Lapis AS-100-2094	Waterfall AS-100-2691	Green Apple AS-100-2087	Sunshine AS-100-2082	Poppy AS-100-2091	Red Delicious AS-100-2014
Quarry Blue AS-100-2026	Cobalt AS-100-2045	Turquoise AS-100-2841	Willow AS-100-2028	Straw AS-100-2034	Orchid AS-100-2843	Aubergine AS-100-2036
Thistle AS-100-2085	Midnight AS-100-2025	Pine Needle AS-100-2022	Eucalyptus AS-100-2047	Goldenrod AS-100-2090	Mulberry AS-100-2044	Coffee Bean AS-100-2083

High Performance Woven Textile

Our exceptional collection of textiles can be used in any space to add ambiance and mood. These textile wallcoverings are quieter than paint and create a softer feel in your space. In addition to using our textiles direct to drywall they can also be used to wrap:

- panels
- partitions
- operable walls





Playlist

High Performance Woven Textile

Wallcovering • Panel Systems • Partitions

Specifications

Composition: 96% Polyester, 4% Metalized Polyester Yarn
Up to 96% Post-Industrial Content
(Varies by Color, Minimum 62%)
Weight: 13 oz. per lineal yard
Backing: Acrylic Latex
Width: 54"
Roll Size: 50 Yards
Repeat: Random Match

Performance

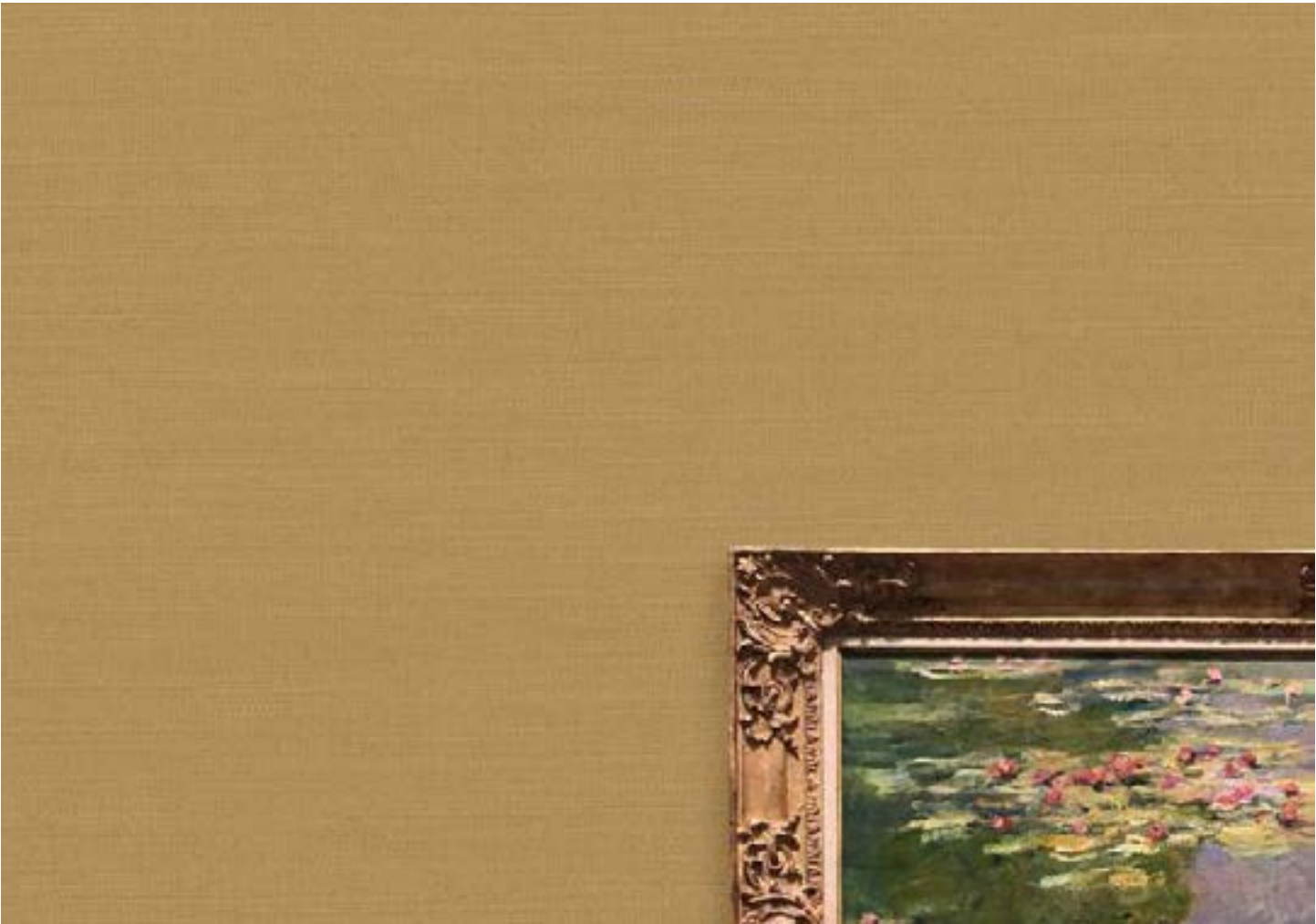
Abrasion Resistance: (ASTM D-4157) 51,000 double rubs
Colorfastness: (AATCC-16A) Exceeds Class 4.0 / 40 hrs.
Performance Topcoat: Stain Guard

Environmental

Does Not Contain:
PVC • Chlorine • Plasticizers • Heavy metals
Formaldehyde • Ozone depleting substances
Volatile Organic Compounds (VOC's)
Conserving Natural Resources:
Diverts waste from landfills
Offsets the need to refine new crude oil
Requires less energy to produce
Up to 96% Post-Industrial Content
(Varies by Color, Minimum 62%)

Flammability

Tunnel Test: (ASTM E-84) Class A
Corner Burn: (UBC 8-2) Passes



Artist

AS-311-01



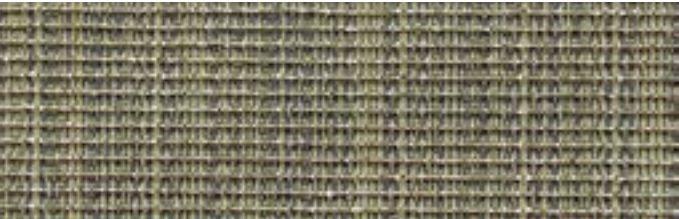
Fast Forward

AS-311-02



Genre

AS-311-03



Shuffle

AS-311-04



Tune

AS-311-05



Repeat

AS-311-06



Rewind

AS-311-07



Album

AS-311-08



Song

AS-311-09



Skip

AS-311-10



Play

AS-311-11



Stop

AS-311-12



Pause

AS-311-13



Production

High Performance Woven Textile

Wallcovering • Panel Systems • Partitions

Specifications

Composition: 67% Polyester, 33% Olefin
43% Recycled Content – Repreve®
10% Post-Consumer (Polyester), 33% Post-Industrial (Olefin)
Weight: 18 oz. per lineal yard
Backing: Acrylic Latex
Width: 54"
Roll Size: 50 Yards
Repeat: Random Match

Performance

Abrasion Resistance: (ASTM D-4157-02) 100,000 double rubs
Colorfastness: (AATCC-16A) Passes Class 5.0 / 40 hrs.
Performance Topcoat: Crypton®

Environmental

Does Not Contain:
PVC • Chlorine • Plasticizers • Heavy metals
Formaldehyde • Ozone depleting substances
Volatile Organic Compounds (VOC's)
Conserving Natural Resources:
Diverts waste from landfills
Offsets the need to refine new crude oil
Requires less energy to produce
43% Recycled Content – Repreve®
10% Post-Consumer (Polyester), 33% Post-Industrial (Olefin)

Flammability

Tunnel Test: (ASTM E-84) Class A
Corner Burn: (UBC 8-2) Passes



Venue

AS-431-01



Ovation

AS-431-02



Stage

AS-431-03



Will Call

AS-431-04



Ticket

AS-431-05



Wristband

AS-431-06



Opening Act

AS-431-07



Roadie

AS-431-08



Crowd

AS-431-09



Rock Star

AS-431-10



Hip Hop

High Performance Woven Textile

Wallcovering • Panel Systems • Partitions

Specifications

Composition: 100% Polyester
Weight: 16 oz. per lineal yard
Backing: Acrylic Latex
Width: 54"
Roll Size: 50 Yards
Repeat: Random Match

Environmental

Does Not Contain:
PVC • Chlorine • Plasticizers • Heavy metals
Formaldehyde • Ozone depleting substances
Volatile Organic Compounds (VOC's)
Conserving Natural Resources:
Diverts waste from landfills
Offsets the need to refine new crude oil
Requires less energy to produce

Performance

Abrasion Resistance: (ASTM D-4157-02) 100,000 double rubs
Colorfastness: (AATCC-16A) Passes Class 5.0 / 40 hrs.
Performance Topcoat: Crypton®

Flammability

Tunnel Test: (ASTM E-84) Class A
Corner Burn: (UBC 8-2) Passes



Champagne

AS-220-01



Mogul

AS-220-02



Limo

AS-220-03



Yacht

AS-220-04



Club

AS-220-05



Entourage

AS-220-06



Celebrity

AS-220-07



VIP

AS-220-08



Diva

AS-220-09



Bling

AS-220-10



Wattage

High Performance Woven Textile

Wallcovering • Panel Systems • Partitions

Specifications

Composition: 80% Polyester, 20% Olefin
46% Recycled Content – Repreve®
11% Post-Consumer, 35% Post-Industrial

Weight: 14 oz. per lineal yard

Backing: Acrylic Latex

Width: 54"

Roll Size: 50 Yards

Repeat: Random Match

Performance

Abrasion Resistance: (ASTM D-4157-02) 100,000 double rubs

Colorfastness: (AATCC-16A) Passes Class 5.0 / 40 hrs.

Performance Topcoat: Crypton®

Environmental

Does Not Contain:

PVC • Chlorine • Plasticizers • Heavy metals

Formaldehyde • Ozone depleting substances

Volatile Organic Compounds (VOC's)

Conserving Natural Resources:

Diverts waste from landfills

Offsets the need to refine new crude oil

Requires less energy to produce

46% Recycled Content – Repreve®

11% Post-Consumer, 35% Post-Industrial

Flammability

Tunnel Test: (ASTM E-84) Class A

Corner Burn: (UBC 8-2) Passes



Fret

AS-331-01



Stagehand

AS-331-02



Fired Up

AS-331-03



Fusion

AS-331-04



Heavy Metal

AS-331-05



Platinum

AS-331-06



Amp

AS-331-07



Feedback

AS-331-08



Venue

AS-331-09



Buzz

AS-331-10





Groupie

High Performance Woven Textile

Wallcovering • Panel Systems • Partitions

Specifications

Composition: 100% Polyester
52% Recycled Post-Industrial Content
Weight: 13 oz. per lineal yard
Backing: Acrylic Latex
Width: 54"
Roll Size: 50 Yards
Repeat: Random Match

Performance

Abrasion Resistance: (ASTM D-4157) 51,000 double rubs
Colorfastness: (AATCC-16A) Exceeds Class 4.0 / 40 hrs.
Performance Topcoat: Stain Guard

Environmental

Does Not Contain:
PVC • Chlorine • Plasticizers • Heavy metals
Formaldehyde • Ozone depleting substances
Volatile Organic Compounds (VOC's)
Conserving Natural Resources:
Diverts waste from landfills
Offsets the need to refine new crude oil
Requires less energy to produce
52% Recycled Post-Industrial Content

Flammability

Tunnel Test: (ASTM E-84) Class A
Corner Burn: (UBC 8-2) Passes



Miami

AS-531-01



Nashville

AS-531-03



Toronto

AS-531-05



Montreal

AS-531-07



Los Angeles

AS-531-09



Las Vegas

AS-531-11



Boston

AS-531-13



Atlanta

AS-531-15



New York

AS-531-02



New Orleans

AS-531-04



Detroit

AS-531-06



Philadelphia

AS-531-08



Cleveland

AS-531-10



San Francisco

AS-531-12



Chicago

AS-531-14



Be Bop

High Performance Woven Textile

Wallcovering • Panel Systems • Partitions

Specifications

Composition: 100% Polyester
Weight: 13 oz. per lineal yard
Backing: Acrylic Latex
Width: 54"
Roll Size: 50 Yards
Repeat: Random Match

Environmental

Does Not Contain:
PVC • Chlorine • Plasticizers • Heavy metals
Formaldehyde • Ozone depleting substances
Volatile Organic Compounds (VOC's)
Conserving Natural Resources:
Diverts waste from landfills
Offsets the need to refine new crude oil
Requires less energy to produce

Performance

Abrasion Resistance: (ASTM D-4157) 51,000 double rubs
Colorfastness: (AATCC-16A) Exceeds Class 4.0 / 40 hrs.
Performance Topcoat: Stain Guard

Flammability

Tunnel Test: (ASTM E-84) Class A
Corner Burn: (UBC 8-2) Passes



Jubilee

AS-840-01



Lush

AS-840-02



Escapade

AS-840-03



Trickster

AS-840-04



Merry

AS-840-05



Caper

AS-840-06



Antics

AS-840-07



Utopia

AS-840-08



Applause

AS-840-09



Sensation

AS-840-10



Vava Voom

AS-840-11



Harmony

High Performance Woven Textile

Wallcovering • Panel Systems • Partitions

Specifications

Composition: 80% Polyester, 20% Olefin

20% Recycled Content – Repreve®

20% Post-Industrial (Olefin)

Weight: 18 oz. per lineal yard

Backing: Acrylic Latex

Width: 54"

Roll Size: 50 Yards

Repeat: Random Match

Performance

Abrasion Resistance: (ASTM D-4157) 51,000 double rubs

Colorfastness: (AATCC-16A) Exceeds Class 4.0 / 40 hrs.

Performance Topcoat: Stain Guard

Environmental

Does Not Contain:

PVC • Chlorine • Plasticizers • Heavy metals

Formaldehyde • Ozone depleting substances

Volatile Organic Compounds (VOC's)

Conserving Natural Resources:

Diverts waste from landfills

Offsets the need to refine new crude oil

Requires less energy to produce

20% Recycled Content – Repreve®

20% Post-Industrial (Olefin)

Flammability

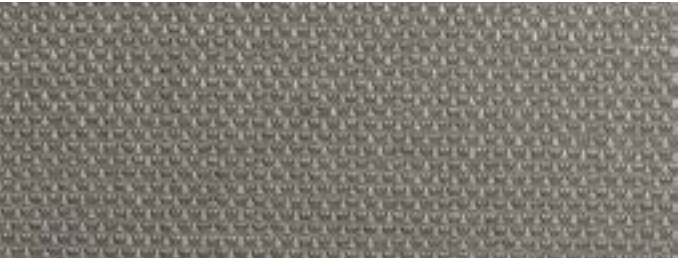
Tunnel Test: (ASTM E-84) Class A

Corner Burn: (UBC 8-2) Passes



Concerto

AS-131-01



Mambo

AS-131-02



Bohemian

AS-131-03



Overture

AS-131-04



Marimba

AS-131-05



Rhapsody

AS-131-06



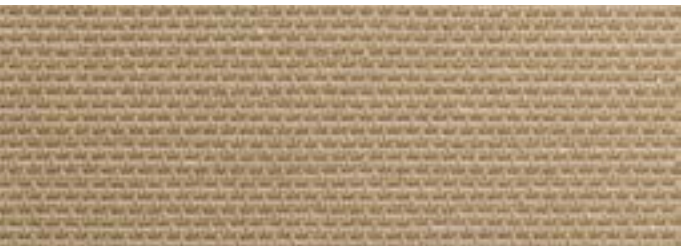
Two Step

AS-131-07



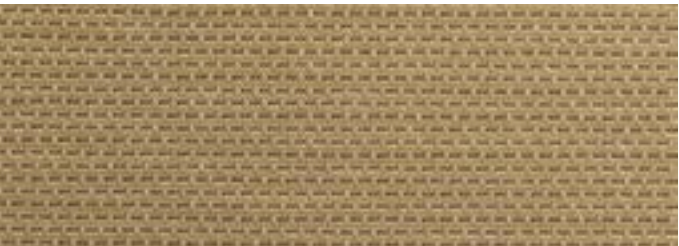
Prelude

AS-131-08



Melody

AS-131-09



Interlude

AS-131-10



Jazz

AS-131-11



Rhythm

High Performance Woven Textile

Wallcovering • Panel Systems • Partitions

Specifications

Composition: 65% Polyester, 35% Olefin
35% Recycled Content – Repreve®
35% Post-Industrial

Weight: 13 oz. per lineal yard

Backing: Acrylic Latex

Width: 54"

Roll Size: 50 Yards

Repeat: Random Match

Performance

Abrasion Resistance: (ASTM D-4157) 51,000 double rubs

Colorfastness: (AATCC-16A) Exceeds Class 4.0 / 40 hrs.

Performance Topcoat: Stain Guard

Environmental

Does Not Contain:

PVC • Chlorine • Plasticizers • Heavy metals
Formaldehyde • Ozone depleting substances

Volatile Organic Compounds (VOC's)

Conserving Natural Resources:

Diverts waste from landfills

Offsets the need to refine new crude oil

Requires less energy to produce

35% Recycled Content – Repreve®

35% Post-Industrial

Flammability

Tunnel Test: (ASTM E-84) Class A

Corner Burn: (UBC 8-2) Passes



Stevie

AS-511-01



Bono

AS-511-02



John

AS-511-03



Bruce

AS-511-04



Steven

AS-511-05



Janis

AS-511-06



Jimi

AS-511-07



Roger

AS-511-08



Pete

AS-511-09



Mick

AS-511-10



Paul

AS-511-11



Gene

AS-511-12



Feedback

High Performance Woven Textile

Wallcovering • Panel Systems • Partitions

Specifications

Composition: 100% Polyester
85% Recycled Content – Repreve®
30% Post-Consumer, 55% Post-Industrial
Weight: 16 oz. per lineal yard
Backing: Acrylic Latex
Width: 54"
Roll Size: 50 Yards
Repeat: Random Match

Performance

Abrasion Resistance: (ASTM D-4157-02) 100,000 double rubs
Colorfastness: (AATCC-16A) Passes Class 5.0 / 40 hrs.
Performance Topcoat: Crypton®

Environmental

Does Not Contain:
PVC • Chlorine • Plasticizers • Heavy metals
Formaldehyde • Ozone depleting substances
Volatile Organic Compounds (VOC's)
Conserving Natural Resources:
Diverts waste from landfills
Offsets the need to refine new crude oil
Requires less energy to produce
85% Recycled Content – Repreve®
30% Post-Consumer, 55% Post-Industrial

Flammability

Tunnel Test: (ASTM E-84) Class A
Corner Burn: (UBC 8-2) Passes



Amplifier

AS-031-01



Velocity

AS-031-02



Signal

AS-031-03



Frequency

AS-031-04



Circuit

AS-031-05



Radar

AS-031-06



Receiver

AS-031-07



Channel

AS-031-08



Transmitter

AS-031-09



Echo

AS-031-10



Audio

High Performance Woven Textile

Wallcovering • Panel Systems • Partitions

Specifications

Composition: 100% Polyester
85% Recycled Content – Repreve®
30% Post-Consumer, 55% Post-Industrial
Weight: 16 oz. per lineal yard
Backing: Acrylic Latex
Width: 54"
Roll Size: 50 Yards
Repeat: Random Match

Performance

Abrasion Resistance: (ASTM D-4157-02) 100,000 double rubs
Colorfastness: (AATCC-16A) Passes Class 5.0 / 40 hrs.
Performance Topcoat: Crypton®

Environmental

Does Not Contain:
PVC • Chlorine • Plasticizers • Heavy metals
Formaldehyde • Ozone depleting substances
Volatile Organic Compounds (VOC's)
Conserving Natural Resources:
Diverts waste from landfills
Offsets the need to refine new crude oil
Requires less energy to produce
85% Recycled Content – Repreve®
30% Post-Consumer, 55% Post-Industrial

Flammability

Tunnel Test: (ASTM E-84) Class A
Corner Burn: (UBC 8-2) Passes



Bass

AS-620-01



Low

AS-620-05



Treble

AS-620-02



Soundwave

AS-620-06



Mid Range

AS-620-03



Volume

AS-620-07



High

AS-620-04



Soft

AS-620-08



Swing

High Performance Woven Textile

Wallcovering • Panel Systems • Partitions

Specifications

Composition: 100% Polyester
85% Recycled Content – Repreve®
30% Post-Consumer, 55% Post-Industrial
Weight: 16 oz. per lineal yard
Backing: Acrylic Latex
Width: 54"
Roll Size: 50 Yards
Repeat: Random Match

Performance

Abrasion Resistance: (ASTM D-4157-02) 100,000 double rubs
Colorfastness: (AATCC-16A) Passes Class 5.0 / 40 hrs.
Performance Topcoat: Crypton®

Environmental

Does Not Contain:
PVC • Chlorine • Plasticizers • Heavy metals
Formaldehyde • Ozone depleting substances
Volatile Organic Compounds (VOC's)
Conserving Natural Resources:
Diverts waste from landfills
Offsets the need to refine new crude oil
Requires less energy to produce
85% Recycled Content – Repreve®
30% Post-Consumer, 55% Post-Industrial

Flammability

Tunnel Test: (ASTM E-84) Class A
Corner Burn: (UBC 8-2) Passes



Risque

AS-231-01



Swank

AS-231-05



Fanfare

AS-231-02



Dashing

AS-231-06



Glamorous

AS-231-03



Follies

AS-231-07



Enchanting

AS-231-04



Elegant

AS-231-08



Acoustic Wall Rib

Acoustic Recycled Textile
Wallcovering • Panels • Exhibits • Partitions

Specifications

Composition: Eco-fi® Post-Consumer Solution Dyed Recycled Fiber
100% Recycled Content from Water & Soda Bottles.
Averages 90% Post-Consumer Content
Weight: 24 oz. face weight
Backing: Fused Polyester
Width: 52"
Roll Size: 33 Yards
Repeat: Random Match

Environmental

80 Bottles = 1 Yard Acoustic Wall Rib
Does Not Contain:
PVC • Chlorine • Plasticizers • Heavy metals
Formaldehyde • Ozone depleting substances
Volatile Organic Compounds (VOC's)
Conserving Natural Resources:
Diverts waste from landfills
Offsets the need to refine new crude oil
Requires less energy to produce
UL Environmental: the only acoustical fabric to carry the UL label
Eco-fi® Post-Consumer Solution Dyed Recycled Fiber
100% Recycled Content from Water & Soda Bottles.
Averages 90% Post-Consumer Content

Performance

Abrasion Resistance: (ASTM D-4158)
Full Commercial Serviceability
Antimicrobial Technology: FDA cleared Fosshield®
Colorfastness: (AATCC-16A) Passes Class 5.0 / 40 hrs.
Acoustical Qualities: (ASTM C423) NRC rating .25
Velcro compatible, pill resistant

Flammability

Tunnel Test: (ASTM E-84) Class A
Corner Burn: (NFPA 265) Passes
UL Classification: Flame Spread 15; Smoke Developed 85

Premium acoustic fabric created from 100% recycled content.

Acoustic Solutions

Acoustic Wall Rib

Acoustic Recycled Textile
Wallcovering • Panels • Exhibits • Partitions





Acoustic Wall Mosaic

Acoustic Recycled Textile
Wallcovering • Panels • Exhibits • Partitions

Don't see the color you are looking for? For a small minimum fee we can produce any color from the wall rib colorways



Pearl

AS-421-01



Flax

AS-421-02



Thatch

AS-421-03



Sisal

AS-421-04



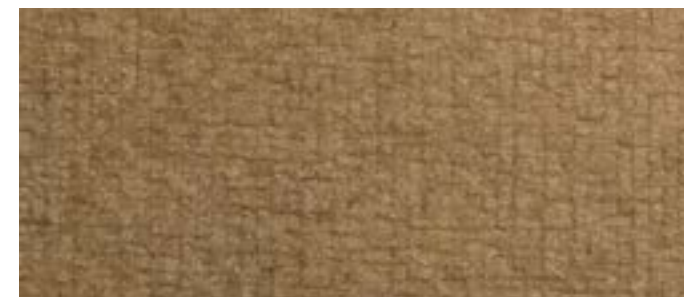
Mineral

AS-421-05



Cream

AS-421-06



Cane

AS-421-07



Saddle

AS-421-08



Flint

AS-421-09



Smoke

AS-421-10



Acoustic Wall Wave

Acoustic Recycled Textile
Wallcovering • Panels • Exhibits • Partitions

Don't see the color you are looking for? For a small minimum fee we can produce any color from the wall rib colorways



Pearl

AS-422-01



Flax

AS-422-02



Thatch

AS-422-03



Sisal

AS-422-04



Mineral

AS-422-05



Cream

AS-422-06



Cane

AS-422-07



Saddle

AS-422-08



Flint

AS-422-09



Smoke

AS-422-10



Acoustic Wall Stria

Acoustic Recycled Textile
Wallcovering • Panels • Exhibits • Partitions

Don't see the color you are looking for? For a small minimum fee we can produce any color from the wall rib colorways



Pearl

AS-423-01



Flax

AS-423-02



Thatch

AS-423-03



Sisal

AS-423-04



Mineral

AS-423-05



Cream

AS-423-06



Cane

AS-423-07



Saddle

AS-423-08



Flint

AS-423-09



Smoke

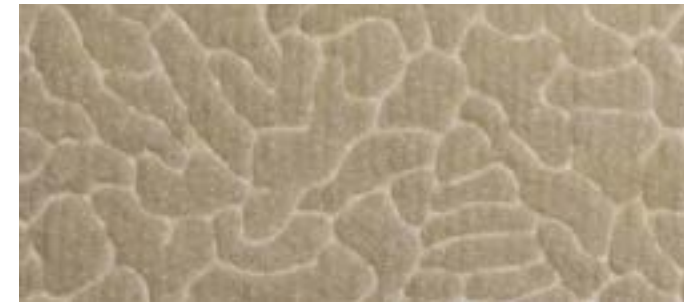
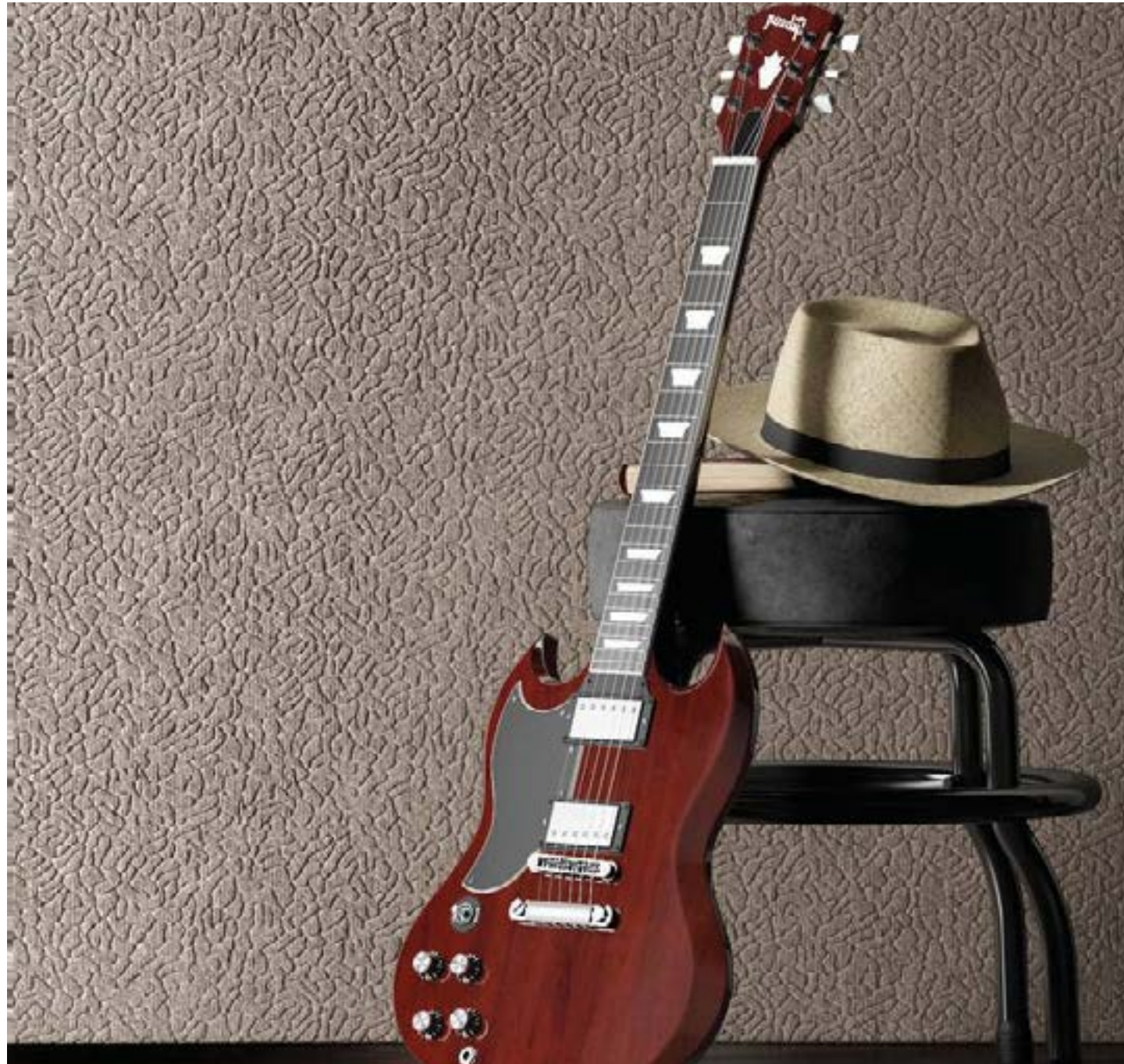
AS-423-10



Acoustic Wall Crackle

Acoustic Recycled Textile
Wallcovering • Panels • Exhibits • Partitions

Don't see the color you are looking for? For a small minimum fee we can produce any color from the wall rib colorways



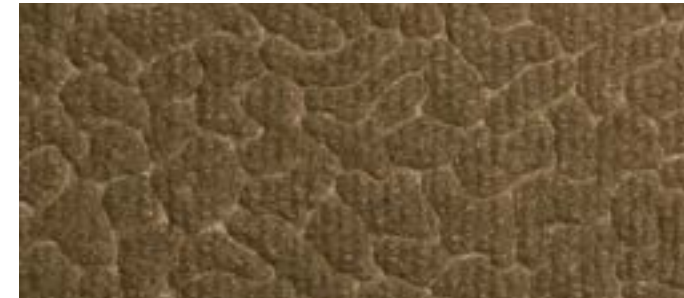
Pearl

AS-424-01



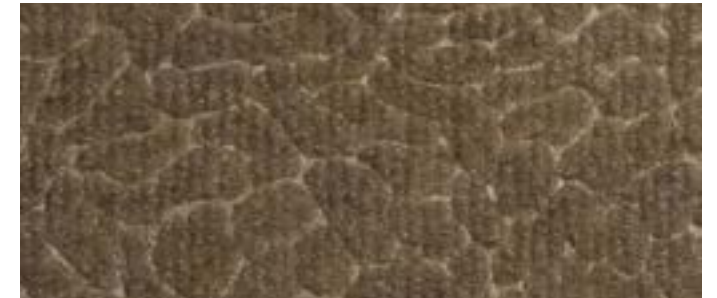
Flax

AS-424-02



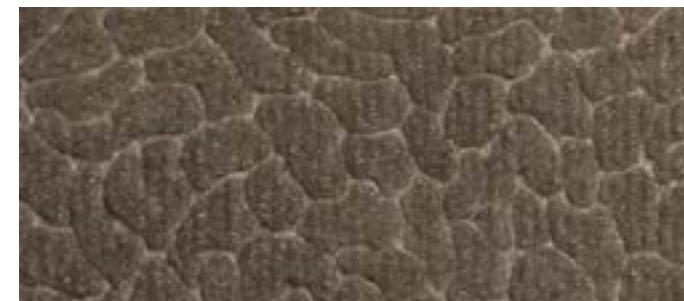
Thatch

AS-424-03



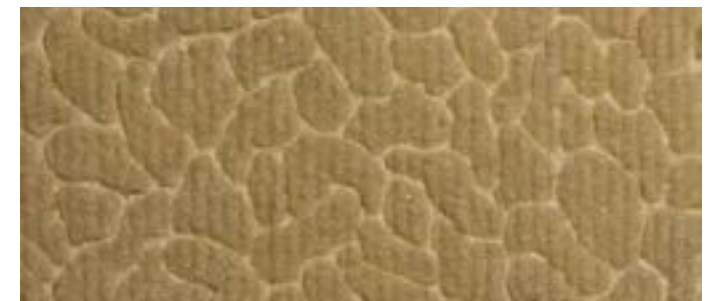
Sisal

AS-424-04



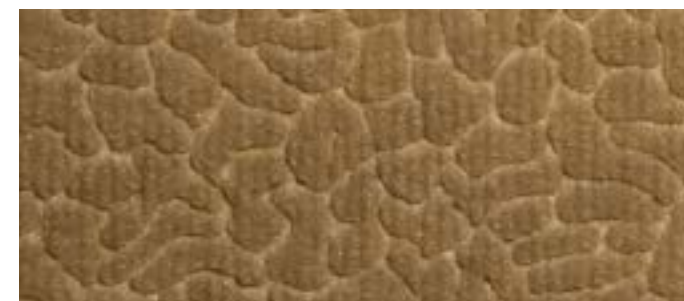
Mineral

AS-424-05



Cream

AS-424-06



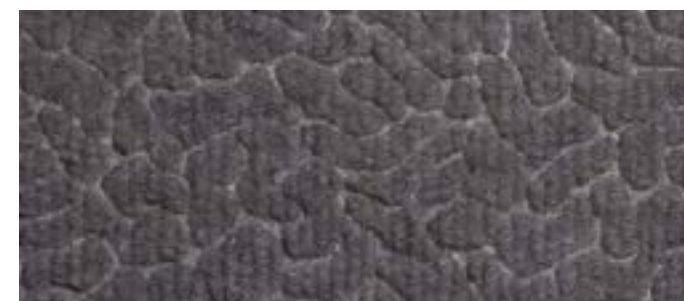
Cane

AS-424-07



Saddle

AS-424-08



Flint

AS-424-09



Smoke

AS-424-10



Acoustic Wall Crepe

Acoustic Recycled Textile
Wallcovering • Panels • Exhibits • Partitions

Don't see the color you are looking for? For a small minimum fee we can produce any color from the wall rib colorways



Pearl

AS-425-01



Flax

AS-425-02



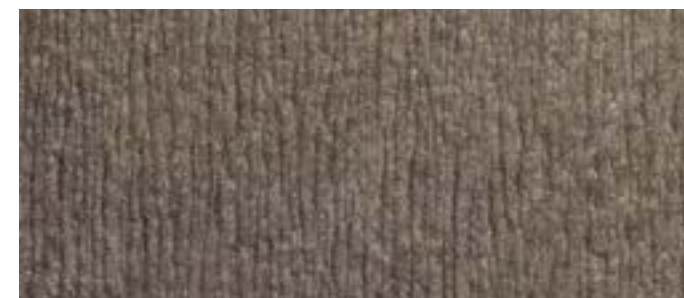
Thatch

AS-425-03



Sisal

AS-425-04



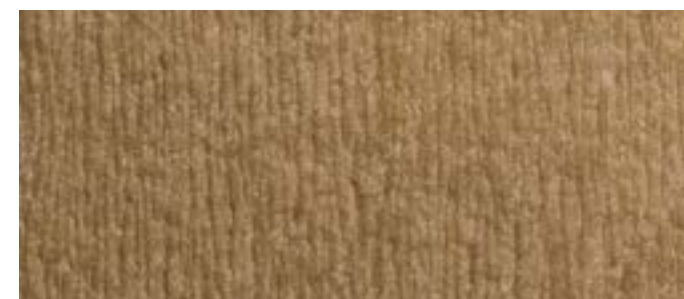
Mineral

AS-425-05



Cream

AS-425-06



Cane

AS-425-07



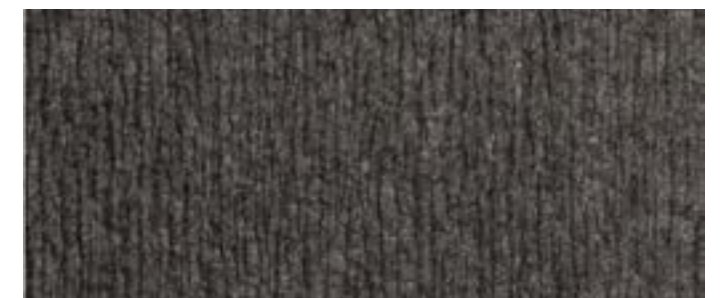
Saddle

AS-425-08



Flint

AS-425-09



Smoke

AS-425-10



Acoustic Wall Felt

Acoustic Recycled Textile
Wallcovering • Panels • Exhibits • Partitions

Don't see the color you are looking for? For a small minimum fee we can produce any color from the wall rib colorways



Pearl

AC-620-01



Stone

AC-620-02



Leaf

AC-620-03



Flint

AC-620-04



Smoke

AC-620-05



Black

AC-620-06



Cranberry

AC-620-07



Celery

AC-620-08



Chardonnay

AC-620-09



Saddle

AC-620-10



Flax

AC-620-11



Thatch

AC-620-12



Bark

AC-620-13



SanFoot Wood Veneer

Real Wood Veneer Wallcovering
Clouds • Baffles • Panels

Choose your favorite SanFoot Wood Veneer species to apply direct to drywall or to wrap any acoustic panel product

Here are a few of our most popular species. Visit our website for over 100 more options.



Maple Quarter Cut



Recon Angora Plank



Cashmere Plank



Douglas Fir Flat Cut



Oak Rift Cut



Walnut Quarter Cut



Cherry Quarter Cut



Teak Quarter Cut



Sapele Quarter Cut



Walnut Flat Cut



Sapele Flat Cut



Charred Plank

We can provide any type of Acoustic Panels!



Flat Panels (AFLT)



Acoustic Digital Art Panels



Clouds (ACLD)



Baffles (ABAF)



**Wood Veneer Wrapped
Acoustic Baffles**



**Dimensional Acoustic
Panel Art (ADIM)**