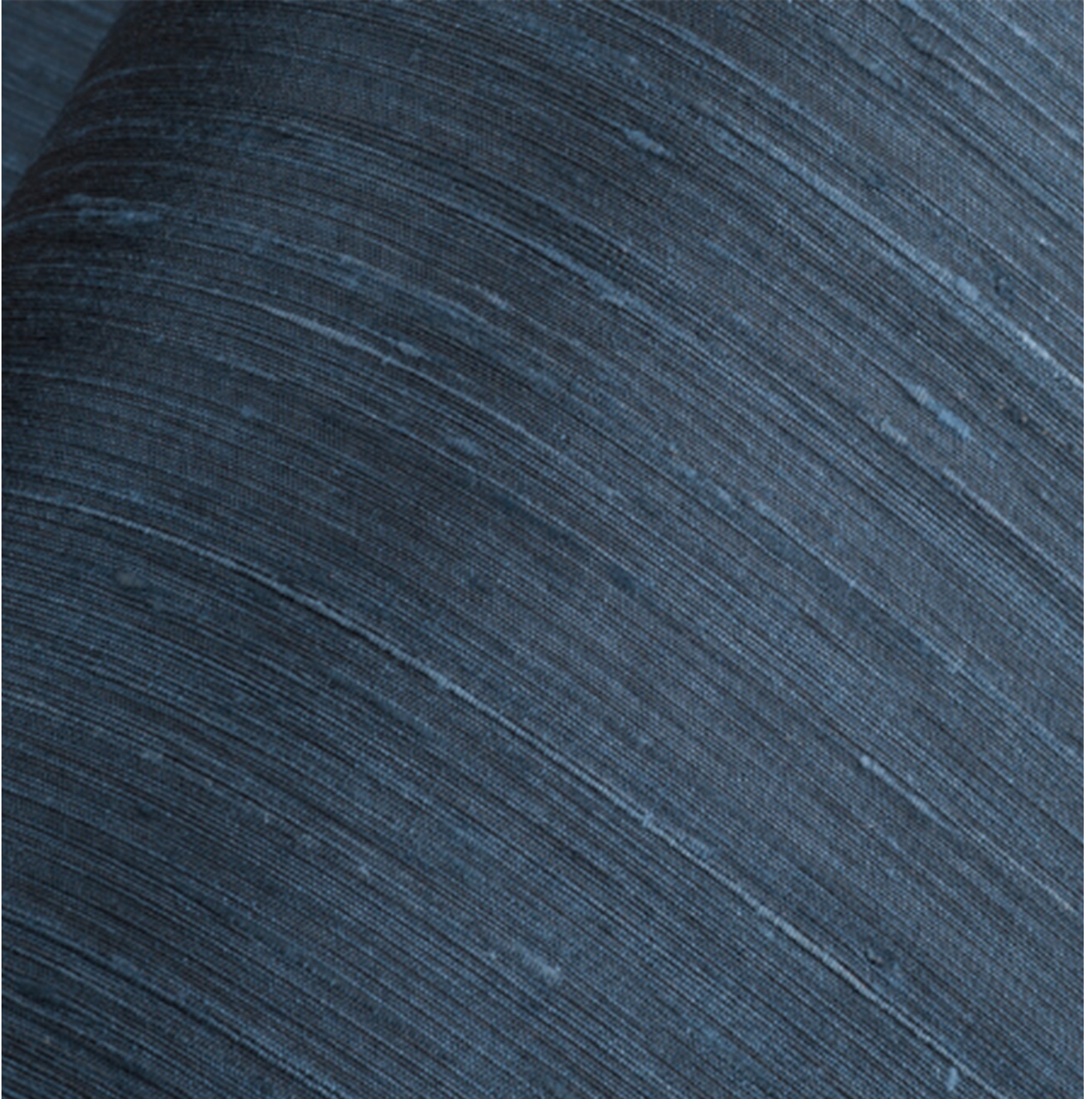


Surface Silk

Collection

Surface Materials has carefully curated a collection of silks woven from both homespun and hand dyed textiles. The Surface Silk Collection presents the perfect balance of classic silks, intricate designs, and modern overlays. Add the luxurious and rich appearance of this 100% renewable resource to your next project.



CHANDRA SILK-1

SPECIFICATION

Name:	Chandra Silk-1	Composition:	silk	: 100%
Width Approx:	110 cm - 43"	Repeat:	height	: no
Weight Approx:	gr/m ¹		width	: no
	oz/lnyd	: 7.0	Hanging:	random, non - reverse



65-1254



65-1255



65-1250



65-1251



65-1256



65-1257



65-1252



65-1253



65-1258



65-1259

CHANDRA SILK-2

SPECIFICATION

Name:	Chandra Silk-2	Composition:	silk	: 100%
Width Approx:	110 cm - 43"	Repeat:	height	: no
Weight Approx:	gr/m ¹		width	: no
	oz/lnyd	: 7.0	Hanging:	random, non - reverse



65-1264



65-1265



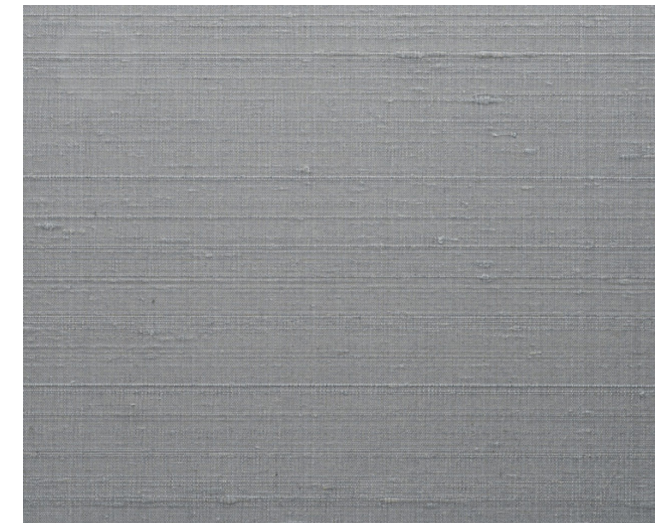
65-1260



65-1261



65-1266



65-1267



65-1262



65-1263



65-1268



65-1269

CHANDRA SILK-3

SPECIFICATION

Name:	Chandra Silk-3	Composition:	silk	: 100%
Width Approx:	110 cm - 43"	Repeat:	height	: no
Weight Approx:	gr/m ¹		width	: no
	oz/lnyd	: 7.0	Hanging:	random, non - reverse



65-1274



65-1275



65-1270



65-1271



65-1276



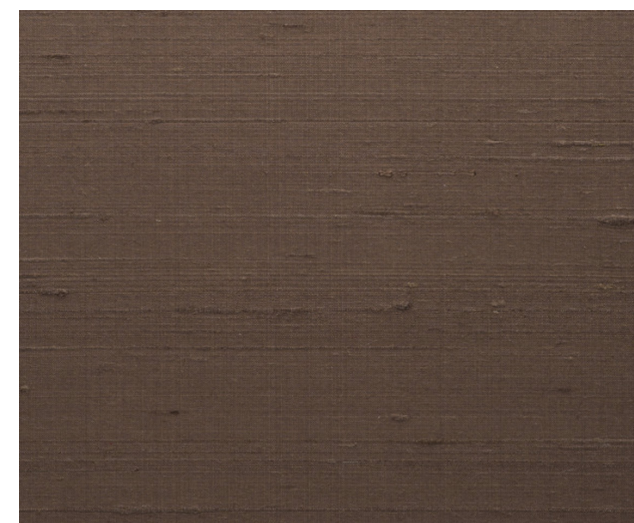
65-1277



65-1272



65-1273



65-1278



65-1279

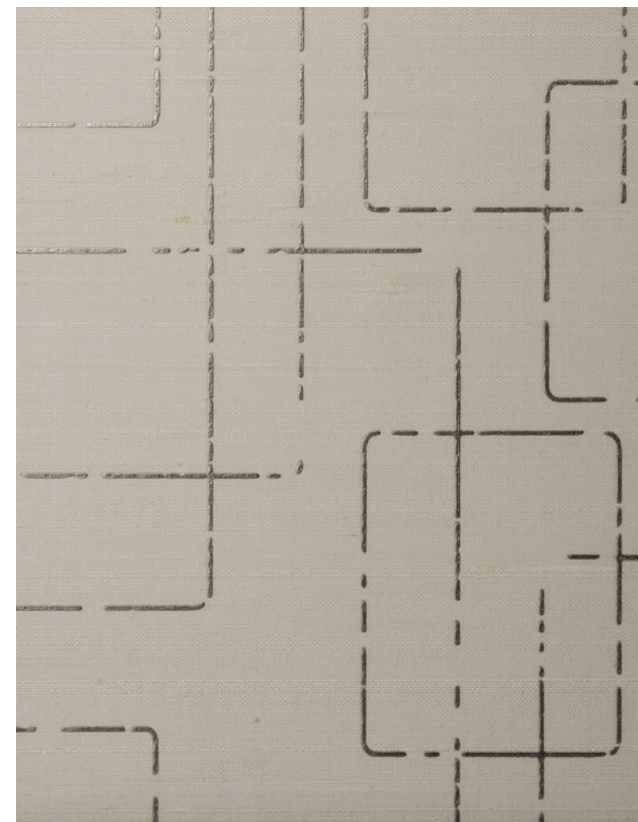
SHAMBALA SILK

SPECIFICATION

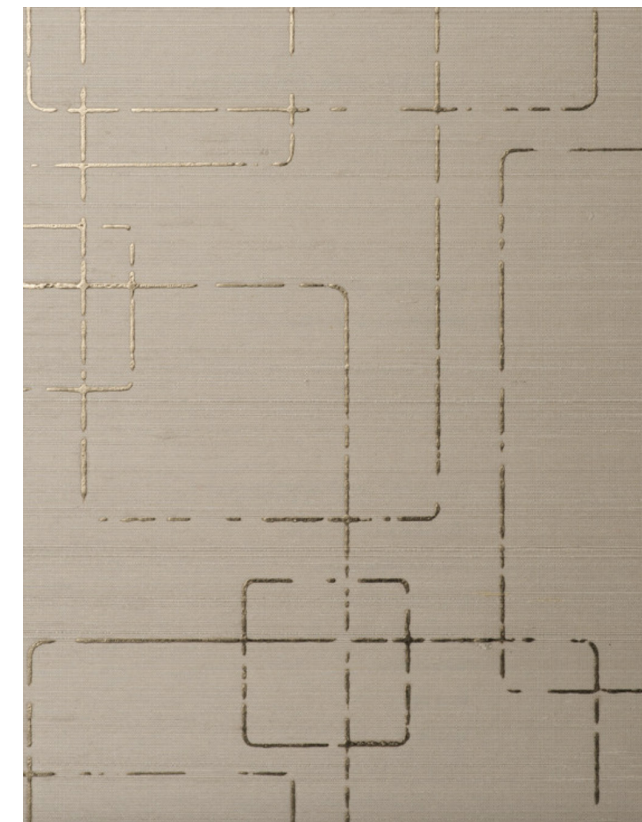
Name:	Shambala Silk	Composition:	silk	: 100%
Width Approx:	110 cm - 43"	Repeat:	height	: 32.0 cm - 12.6"
Weight Approx:	gr/m ²		width	: 27.5 cm - 10.8"
	oz/lnyd	: 7.8	Hanging:	random, non - reverse use a rubber roller in stead of spatula



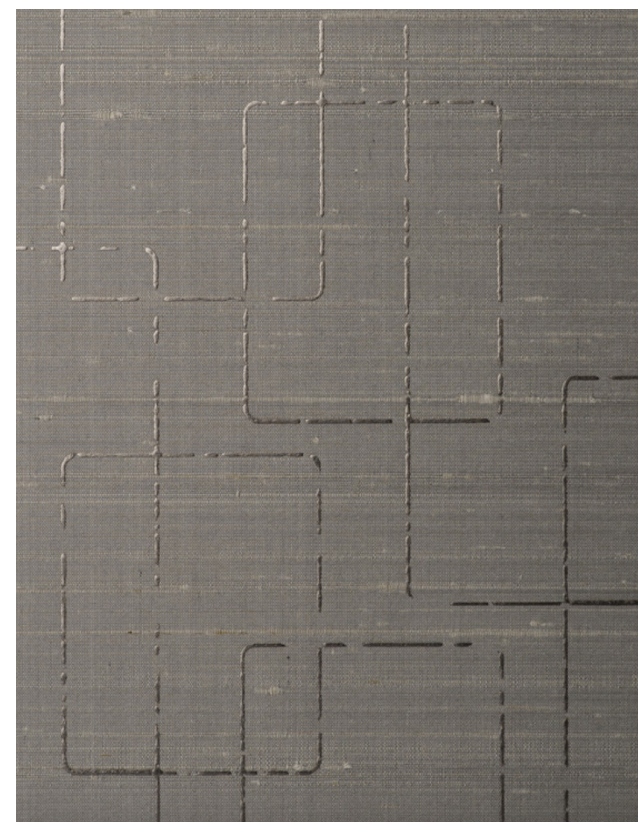
65-1280



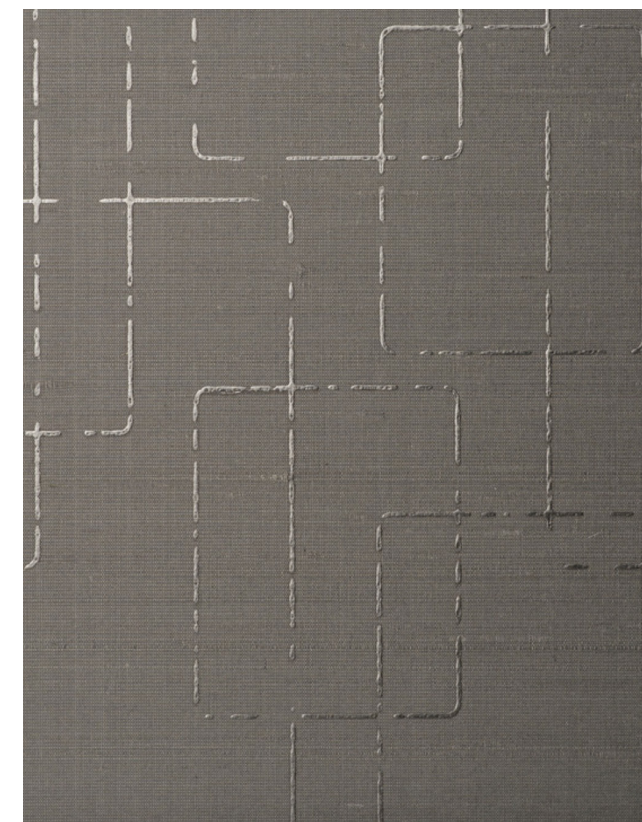
65-1281



65-1282



65-1283



65-1284

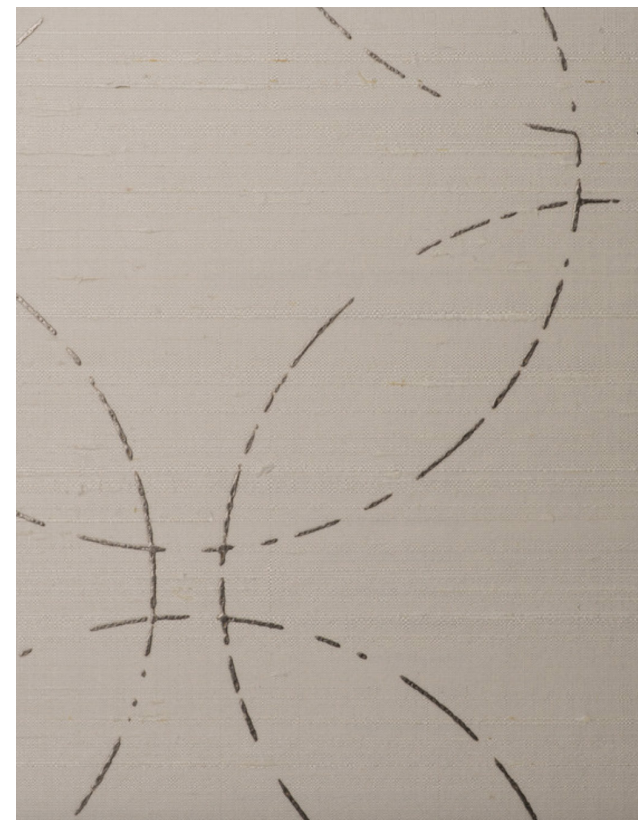
AYESHA SILK

SPECIFICATION

Name:	Ayesha Silk	Composition:	silk	: 100%
Width Approx:	110 cm - 43"	Repeat:	height	: 27.3 cm - 10.7"
Weight Approx:	gr/m ¹		width	: 22.0 cm - 8.7"
	oz/lnyd	: 7.8	Hanging:	random, non - reverse use a rubber roller in stead of spatula



65-1290



65-1291



65-1292



65-1293



65-1294

LOST HORIZON SILK

SPECIFICATION

Name:	Ayesha Silk	Composition:	silk	: 100%
Width Approx:	110 cm - 43"	Repeat:	height	: 21.3 cm - 8.4"
Weight Approx:	gr/m ¹		width	: no
	oz/lnyd	: 7.8	Hanging:	random, non - reverse
				use a rubber roller in stead of spatula



65-1300



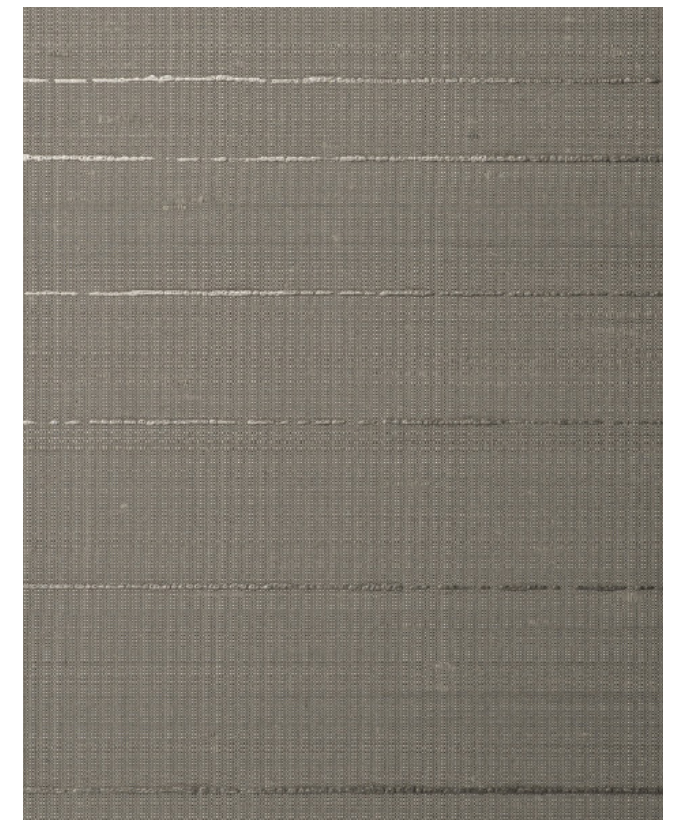
65-1301



65-1302



65-1303



65-1304

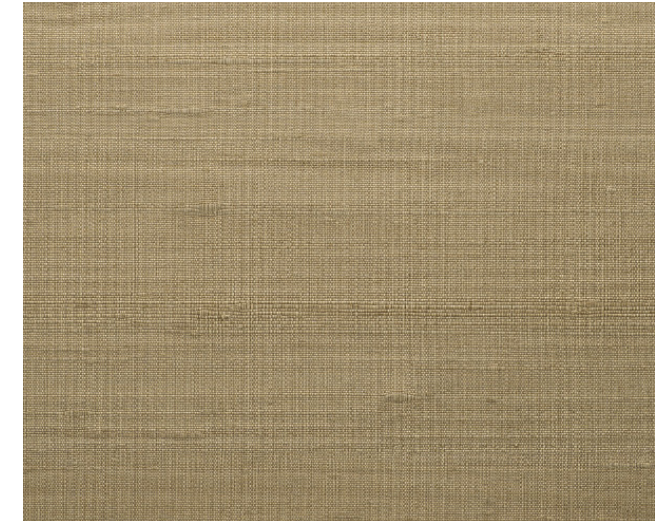
SARAY SILK

SPECIFICATION

Name:	Chandra Silk-3	Composition:	silk	: 100%
Width Approx:	110 cm - 43"	Repeat:	height	: no
Weight Approx:	gr/m ¹		width	: no
	oz/lnyd	: 8.5	Hanging:	random, non - reverse



65-1314



65-1315



65-1310



65-1311



65-1316



65-1317



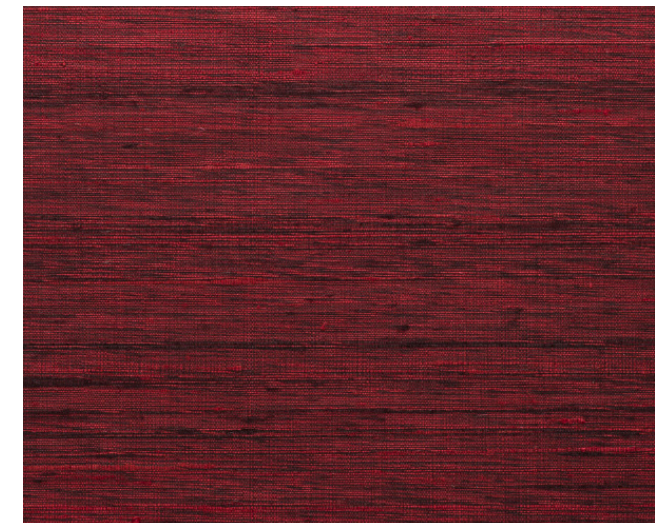
65-1312



65-1313



65-1318



65-1319

TABAZ SILK

SPECIFICATION

Name:	Tabaz Silk	Composition:	silk	: 100%
Width Approx:	137 cm - 54"	Repeat:	height	: no
Weight Approx:	gr/m ¹		width	: no
	oz/lnyd	: 10.7	Hanging:	random, non - reverse



65-1320



65-1321



65-1322



65-1323



65-1324

SAGAR SILK

SPECIFICATION

Name:	Sagar Silk	Composition:	silk	: 100%
Width Approx:	137 cm - 54"	Repeat:	height	: no
Weight Approx:	gr/m ¹		width	: no
	oz/lnyd	: 8.9	Hanging:	random, non - reverse



65-1330



65-1331



65-1332



65-1333



65-1334

CHATEAU CHINON SILKY

SPECIFICATION

Name:	Chateau Chinon Silky	Composition:	linen	: 75%
Width Approx:	137 cm - 54"		nylon	: 25%
Weight Approx:	gr/m ¹	Repeat:	height	: no
	oz/lnyd		width	: no
		Hanging:	random	



65-1340



65-1341



65-1342



65-1343



65-1344

CHENNAI SILKY

SPECIFICATION

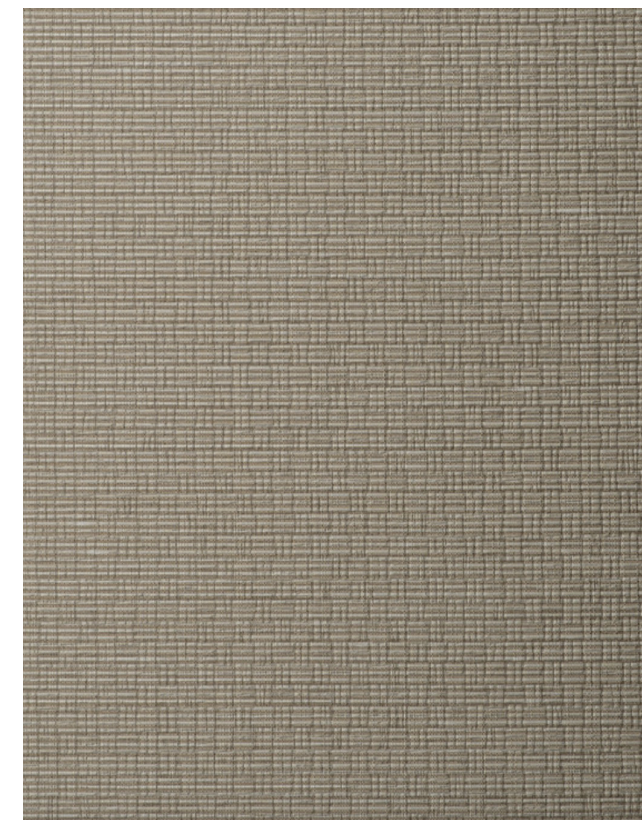
Name:	Chennai Silky	Composition:	viscose	: 90%
Width Approx:	137 cm - 54"		nylon	: 15%
Weight Approx:	gr/m ^l	Repeat:	height	: no
	oz/lnyd		width	: no
	: 340	Hanging:	random	
	: 11.1			



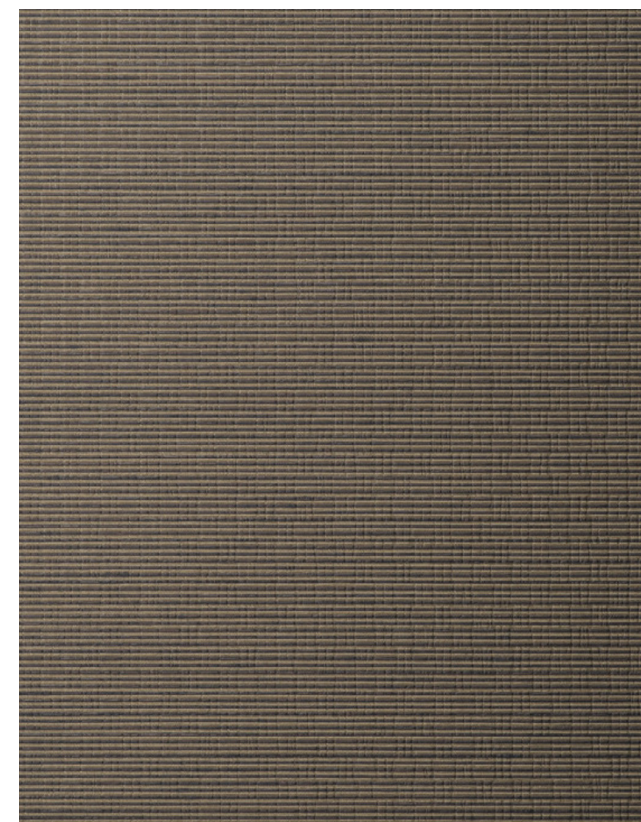
65-1350



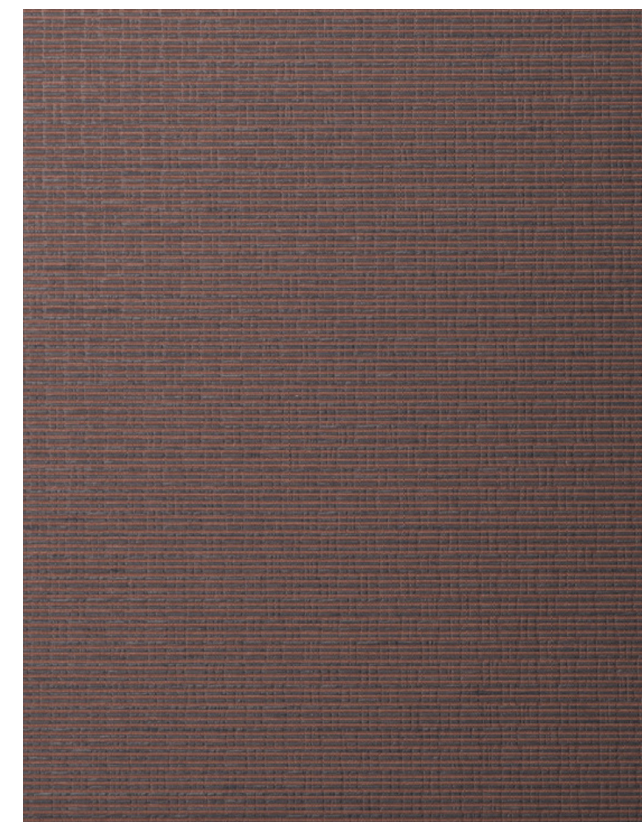
65-1351



65-1352



65-1353



65-1354

MADURAI SILK

SPECIFICATION

Name:	Madurai Silk-3	Composition:	viscose	: 92%
Width Approx:	137 cm - 54"	Repeat:	viscose	: 8%
Weight Approx:	gr/m ^l		height	: no
	oz/l ^{nyd}	: 12.5	width	: no
		Hanging:	random	



65-1374



65-1375



65-1370



65-1371



65-1376



65-1377



65-1372



65-1373



65-1378



65-1379

DEEP SPACES SILKY

SPECIFICATION

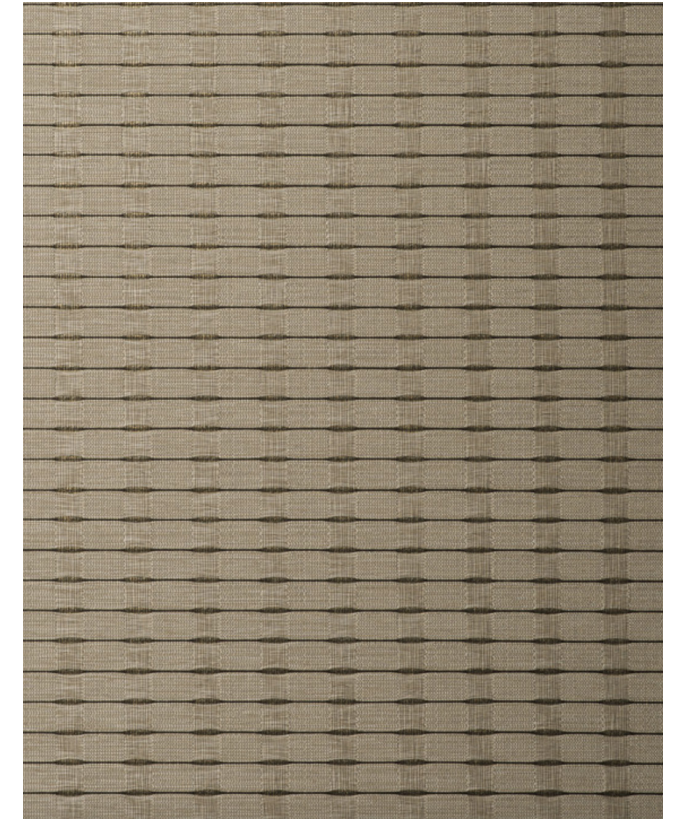
Name:	Deep Spaces Silky	Composition:	linen	: 60%
Width Approx:	137 cm - 54"		viscose	: 26%
Weight Approx:	gr/m ^l		nylon	: 14%
	oz/lnyd	: 12.5	Repeat:	height : no
			width	: no
		Hanging:	random	



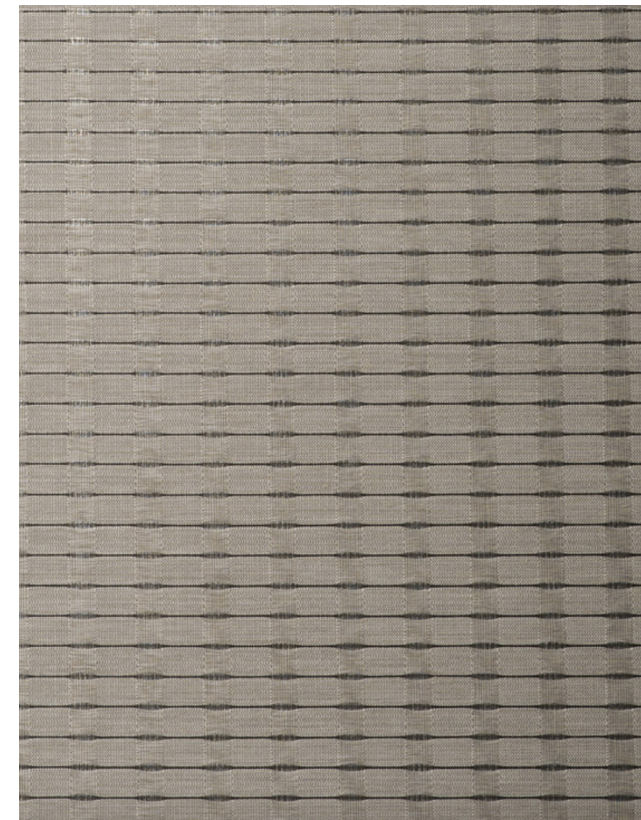
65-1380



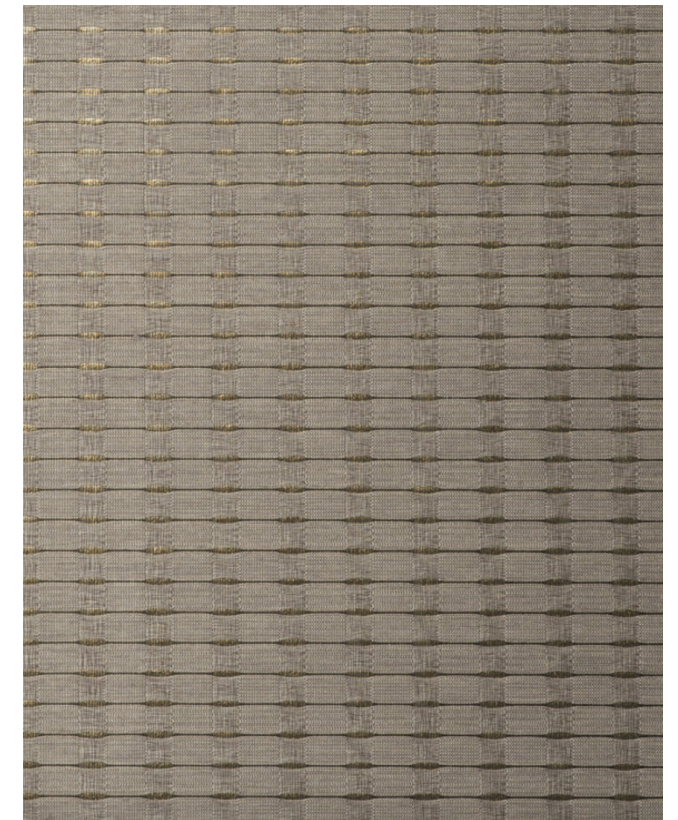
65-1381



65-1382



65-1383



65-1384

KERALA SILKY

SPECIFICATION

Name:	Kerala Silky	Composition:	polyester	: 55%	
Width Approx:	137 cm - 54"		cotton	: 25%	
Weight Approx:	gr/m ¹		viscose	: 20%	
	oz/lnyd	: 13.7	Repeat:	height	: no
				width	: no
			Hanging:	random	



65-1390



65-1391



65-1392



65-1393



65-1394

PRINCESS LACE SILKY

SPECIFICATION

Name:	Princess Lace Silky	Composition:	cotton	: 75%
Width Approx:	137 cm - 54"		nylon	: 25%
Weight Approx:	gr/m ¹	Repeat:	height	: no
	oz/lnyd		width	: no
	: 510	Hanging:	random, pattern cannot be matched	
	: 16.4			



65-1400



65-1401



65-1402



65-1403



65-1404

Check out our other Surface Wallcoverings

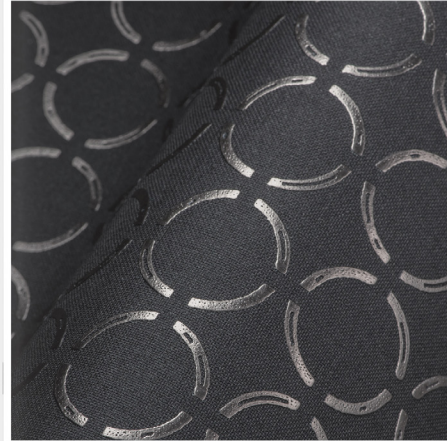
Executive Surfaces 2 Collection

Nothing says luxury like Textile Wallcovering. Executive Surface 2 collection includes elegant silks, rich color palettes and shimmering threads. Executive Surfaces 2 offers all of this and more with 20 fabrics, including large-scale prints, mattes interwoven with hints of shimmer and classic wool. Let Surface Materials bring your walls to life.



Antwerp Collection

These elegant natural liners are detailed by refined color combinations incorporating highly reflective finishing yarns. Offered in rich color palettes from beautiful classic neutrals to bolder more modern colors and color combinations your walls will sparkle with luxurious, sophisticated weaves that balance interwoven hints of shimmer and matte.



Alluvion Collection

Luxury you can feel. Nothing adds feelings of richness and depth to spaces quite like our Alluvion Collection. Browse our selection of natural and high performance textiles and find just the right color, pattern, weave, or composition for your design.

