



PUT A  
SUPERIOR  
PRODUCT  
UNDERFOOT

# FORTIS

HOMOGENEOUS SHEET FLOORING  
for High-Traffic Commercial Spaces

**FORTIS** Homogeneous Flooring from Surface Materials is designed to exceed the rigorous demands of Healthcare, Education, Senior Living, Institutional and other public space. It's easy to install, aesthetically pleasing, cost-effective and guaranteed to last.

## FORTIS WALKS ALL OVER THE COMPETITION

### 10-YEAR WARRANTY

Most competitors offer five.

### STAIN RESISTANCE

Even Betadine in healthcare settings won't leave its mark on FORTIS in lab tests.

### GROUP T ABRASION RATING

For superior abrasion resistance and durability.

### NON-DIRECTIONAL DESIGN

For faster, easier installation with less waste.

### SUPERIOR SLIP RESISTANCE

FORTIS rates  $>.8$  ASTM D2047 & R9 DIN51130

### DOES NOT REQUIRE TWO PART EPOXY UNDER BEDS

Exceeds the environmental standards of our competitors.

	GRABO FORTIS	COMPETITOR M	COMPETITOR A
Warranty	10 YR	5 YR	10 YR
PSI	800	750	750
Slip Resistance	$>.8$ R9	$>.6$	R9
Installation	Non-Directional	Reverse Sheets	Non-Directional
Epoxy Under Beds	No, Tech Design 400	Yes, V95 Two Part Epoxy	No
Abrasion Group	Group T (EN 660)		Group T (EN 649 )
Stain Resistance	Yes Betadine-0 - No Effect	Yes Betadine-0 - No Effect	No Betadine (Slight Effect)



Specify **FORTIS** for your next project!  
CONTACT YOUR REP OR ORDER  
A FORTIS SAMPLE TODAY.



**surface**materials

6655 Parkland Boulevard  
Solon, Ohio 44139

**(440) 248-0000**

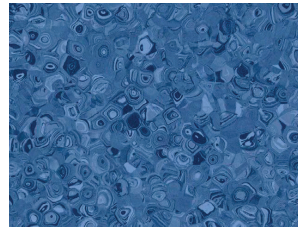
[www.surfacematerials.com](http://www.surfacematerials.com)



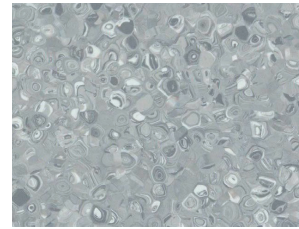
**SPECIFY FORTIS  
FOR YOUR  
NEXT PROJECT!**

# FORTIS

HOMOGENEOUS SHEET FLOORING  
for High-Traffic Commercial Spaces



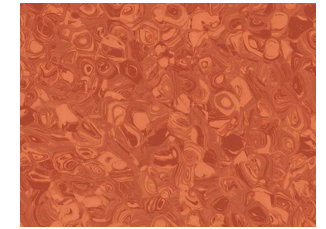
INDIGO



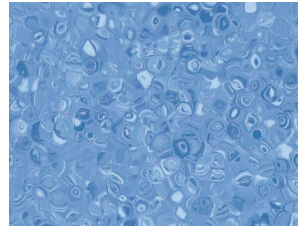
STEEL



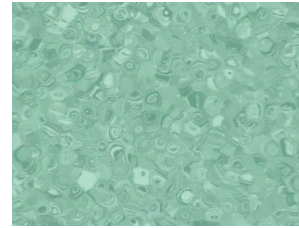
KORK



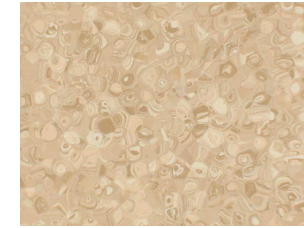
CORAL



COBALT



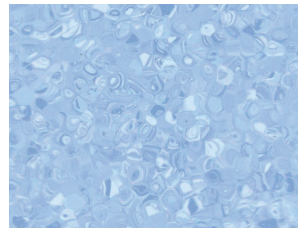
CACTUS



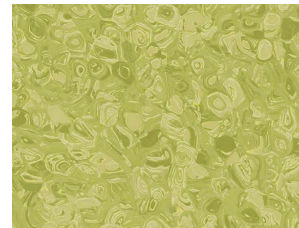
CARAMEL



ORANGE



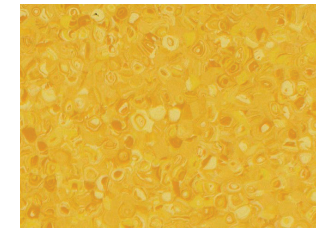
AQUA



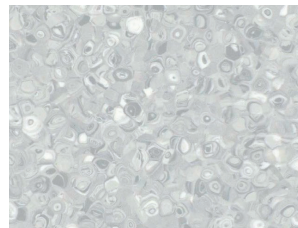
KIWI



SILVER



GOLD



FOG



TOBACCO



BONE



CANARI



ANTHRACITE



SAND



**surface**materials

(440) 248-0000

[www.surfacematerials.com](http://www.surfacematerials.com)