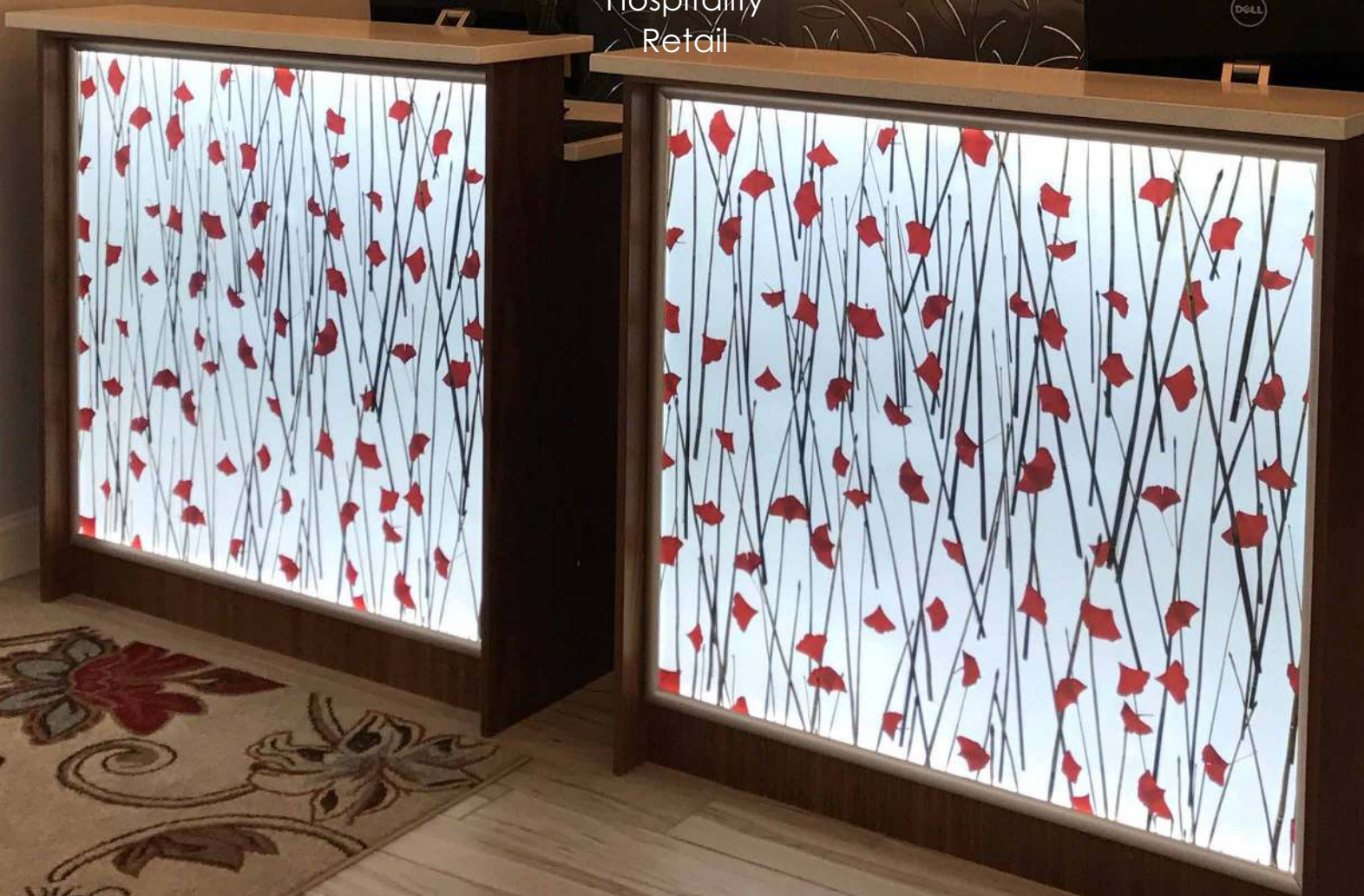




LUMISPLASH™

Decorative Laminates
with LED Edge Lighting

Commercial
Healthcare + Institutional
Hospitality
Retail





Built From The Best Materials

The Ultimate in Interior Finish Products.

Surface Materials was established over 40 years ago and has been growing ever since. Now, as a woman owned business, Surface Materials serves the interior design community as a trusted resource for supplying quality commercial interior finish products including:

Wallcoverings
Floorings
Architectural Laminates
Wood Veneers

Wall Panel Systems
Digital/Scalable Wall Designs
Acoustical Panel Systems
Acoustical Products

Surface Materials works with architects, interior designers, contractors and building owners to help them fully realize their design vision. With a territory covering 15 states in the Midwest and Northeast, Surface Materials' team supports each design project with unique interior finish products that bring a design concept to life.

Surface Materials

6655 Parkland Blvd | Solon, OH 44139
440.248.0000 | surfacematerials.com

ISO 9001:2015 Certified | ISO 14001:2015 Certified | HUB (Historically Underutilized Business) Certified



Contents

| | |
|------------------------------|----|
| What is LumiSplash? | 2 |
| How Does LumiSplash Work? | 4 |
| LumiSplash Design Features | 5 |
| Walls, Casework & Partitions | 6 |
| Tabletops & Bartops | 8 |
| Ceilings, Art & Accents | 10 |
| Backsplashes & Islands | 12 |
| Interchangeable Graphics & | 14 |
| Signage Idea Library | 16 |
| Framing Options | 17 |
| Art Requirement FAQs | 18 |
| How To Order | 19 |



What is LumiSplash?

A Bright Idea

LumiSplash is a patent pending, multilayered, ultra-thin 1/4" (6mm) decorative laminate that emits light evenly across its surface and has impressive impact, scratch, chemical, and abrasion resistant properties. LumiSplash is:

- The first ultra-thin, lighted laminate system with no air gap required for LEDs. This system uses a Light Bar and Light Guide Panel to produce luminance across a translucent surface.
- A one-of-a-kind product that combines art with lighting in a durable laminate, creating a unique focal point for any home or business.
- A low-voltage system that comes with the necessary electrical components to simply plug into a 110-volt receptor. LumiSplash can also be hardwired for permanent installations by a local electrician.
- Suitable for most vertical and horizontal applications where other decorative laminates could be used.
- Easily fabricated with standard woodworking tools such as routers, saws, and drills.
- Easily used to backlight your own stone, acrylic, or other translucent materials with it's Light Guide Panel.



Walls & Partitions



Casework



Tabletops & Bartops



Ceilings



Backsplashes & Islands



Art & Accents



Features

Hundreds of Design Options 

Ultra Thin 

Vertical and Horizontal Applications 

Multiple Frame Options 

How Does LumiSplash Work?



Made in the USA



LED Technology



Patent Pending



One-of-a-Kind



Custom Art

Illuminate Your Space

With LumiSplash, using light as a design element is easy. From backsplashes to tabletops and ceilings to signage, there is a LumiSplash design to fit your space.

LumiSplash is available in kit form with all necessary hardware supplied for installation. This all-in-one contained system saves time and money compared to other products that require extensive fabrication and set-up or bulky bulbs and wiring.

Sizes

- Single-sided available in standard heights of 16", 24" and 48" and in lengths of 48" and 96"
- Single-sided custom lengths can be made to order or may be cut to smaller dimensions from stock panels
- Double-sided available in standard sizes of 24" x 48" and 24" x 96"
- Custom sizes can be made to order for both single and double-sided panels

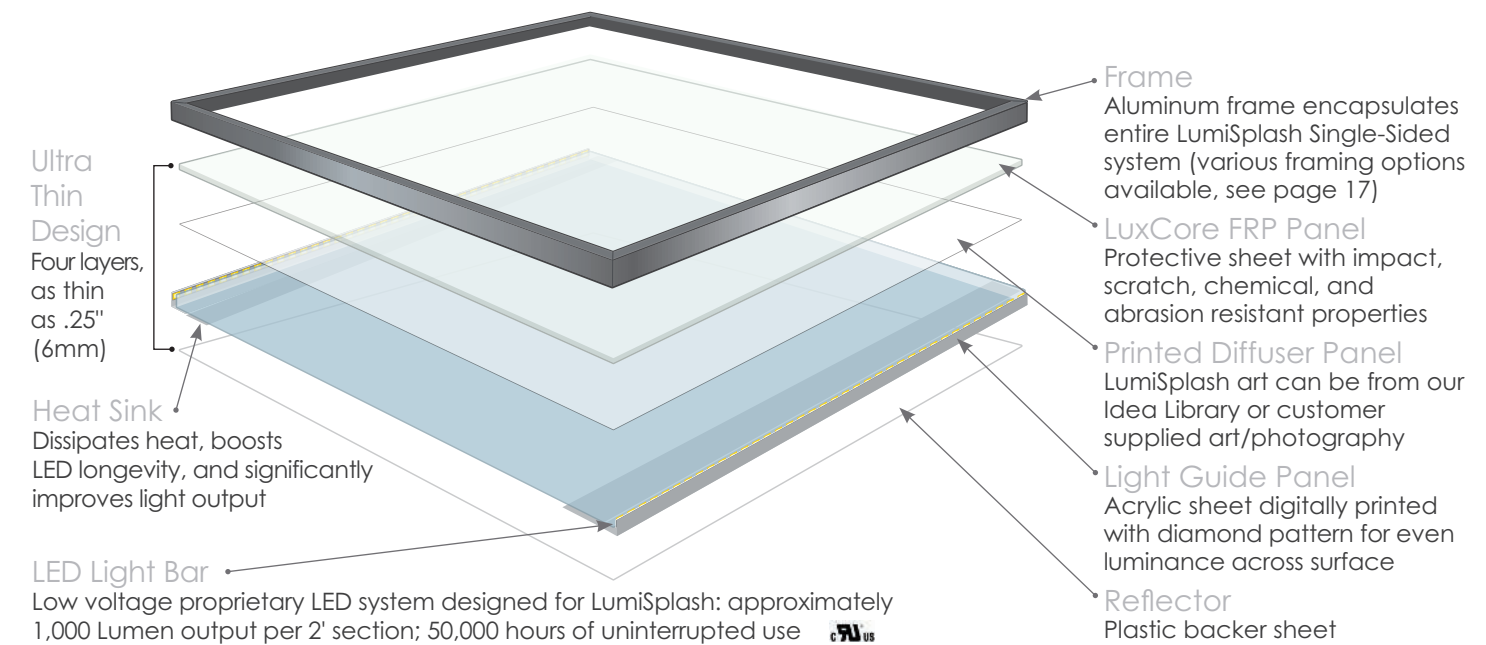
Accessories

- Dimmers
- RGB LED Light Changing System
- Various framing and molding options
- Battery powered system
- Transformers

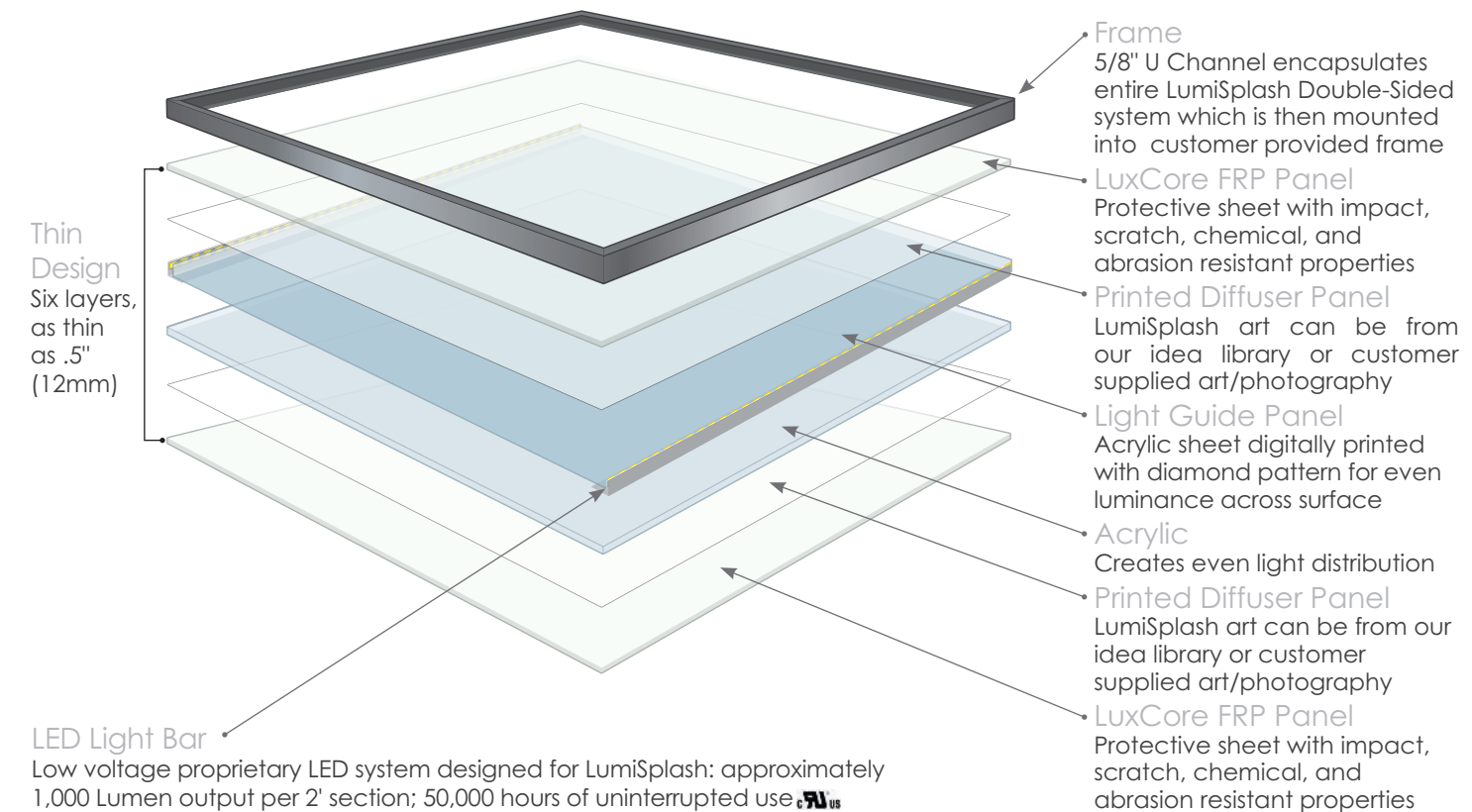
Features

- Ultra-thin and lightweight
- Can withstand 9,150 abrasion cycles meeting NEMA Standard LD3-2005
- Chemical, stain, impact, scratch, and abrasion resistant FRP surface
- Customizable with Interchangeable Graphics System
- A variety of edging, framing, and mounting systems available
- Value engineered for maximum functionality and design
- Easy on-site fabrication allows for accurate outlet and sink cutouts as well as the ability to cut to size

LumiSplash Single-Sided Design



LumiSplash Double-Sided Design



Walls, Casework & Partitions

Light Up the Façade

Turn walls, casework, and partitions into statement pieces with LumiSplash. Create a unique and inviting environment that will capture guests' attention with soft, illuminated walls. Use LumiSplash Double-Sided Design partitions to separate spaces in commercial office spaces or boutique retail environments. Create a focal piece installing LumiSplash into existing or new casework. LumiSplash walls, casework, and partitions can easily compliment a spa or hospitality environment with illuminated art and available dimmer accessory to tailor the space's ambiance with a simple adjustment.



Features

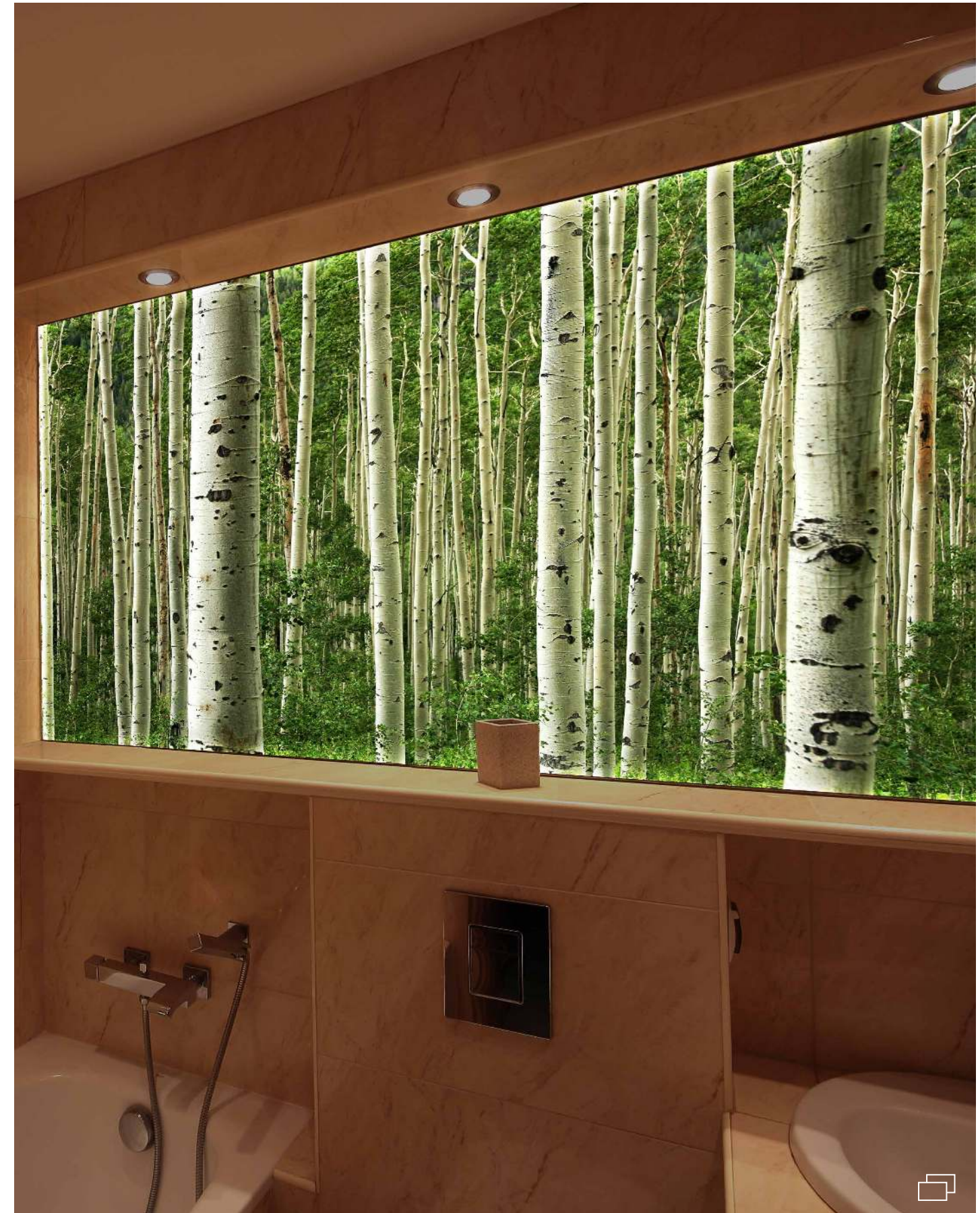
Hundreds of Design Options 

Impact Resistant 

Abrasion Resistant 

Chemical Resistant 

Stain Resistant 



Tabletops & Bartops

Convey a Mood

LumiSplash tabletops and bartops can transform an ordinary piece of furniture into a functional, illuminated work of art. Unique as they are beautiful, these laminates provide soft light that may be dimmed to serve as either task or ambient light.

Utilizing our multilayered panel, graphics, and edging systems, LumiSplash tabletops and bartops are an easy addition to your space. ATI can provide welded and powder-coated edging systems that creates a flawless, complete look (minimum order quantities apply). Bartops and counters can utilize custom moldings to create various effects. When running electricity is not feasible, use our long-lasting, rechargeable battery system to supply light for 8-10 hours.

Our RGB LED Light Changing System provides a smooth lighting transition from red to green to blue, creating a beautiful ambience for your space.

RGB Light Changing System



Features

Hundreds of Design Options 

Impact Resistant 

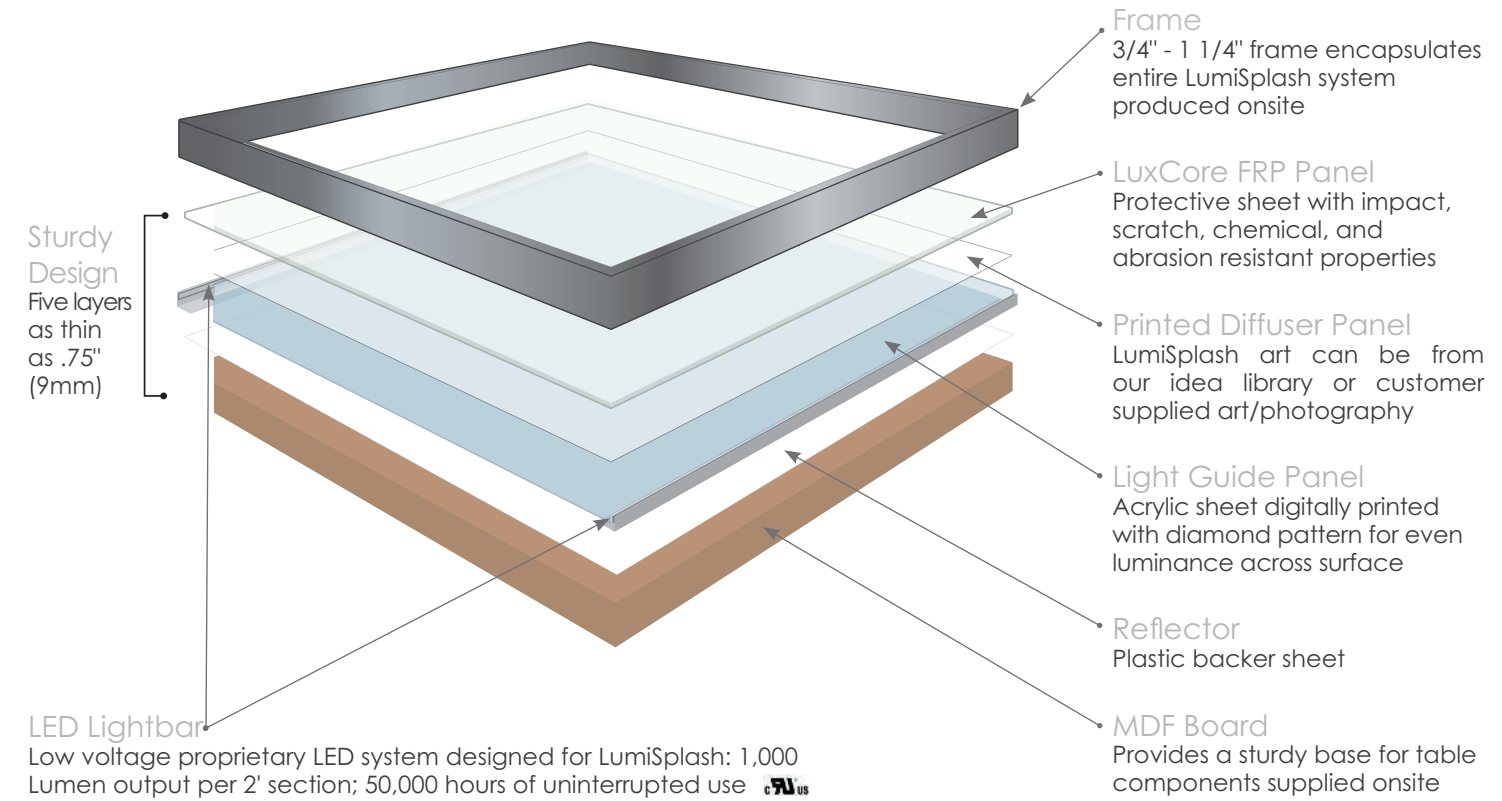
Abrasion Resistant 

Chemical Resistant 

Stain Resistant 



LumiSplash Tabletop Design



Ceilings, Art & Accents

Let the Light in

Create the illusion of skylights to help the environment feel more relaxed. Consider LumiSplash for a suspended system to become a functional focal point of any room. Ceiling installations will require onsite framing and may even require engineering.

Bring beautiful works of art to life. Use any of our LumiSplash applications for brand emphasis and stand out from the crowd in a variety of industries – hospitality, healthcare and institutional, retail, commercial, and residential.



Features

Hundreds of Design Options 

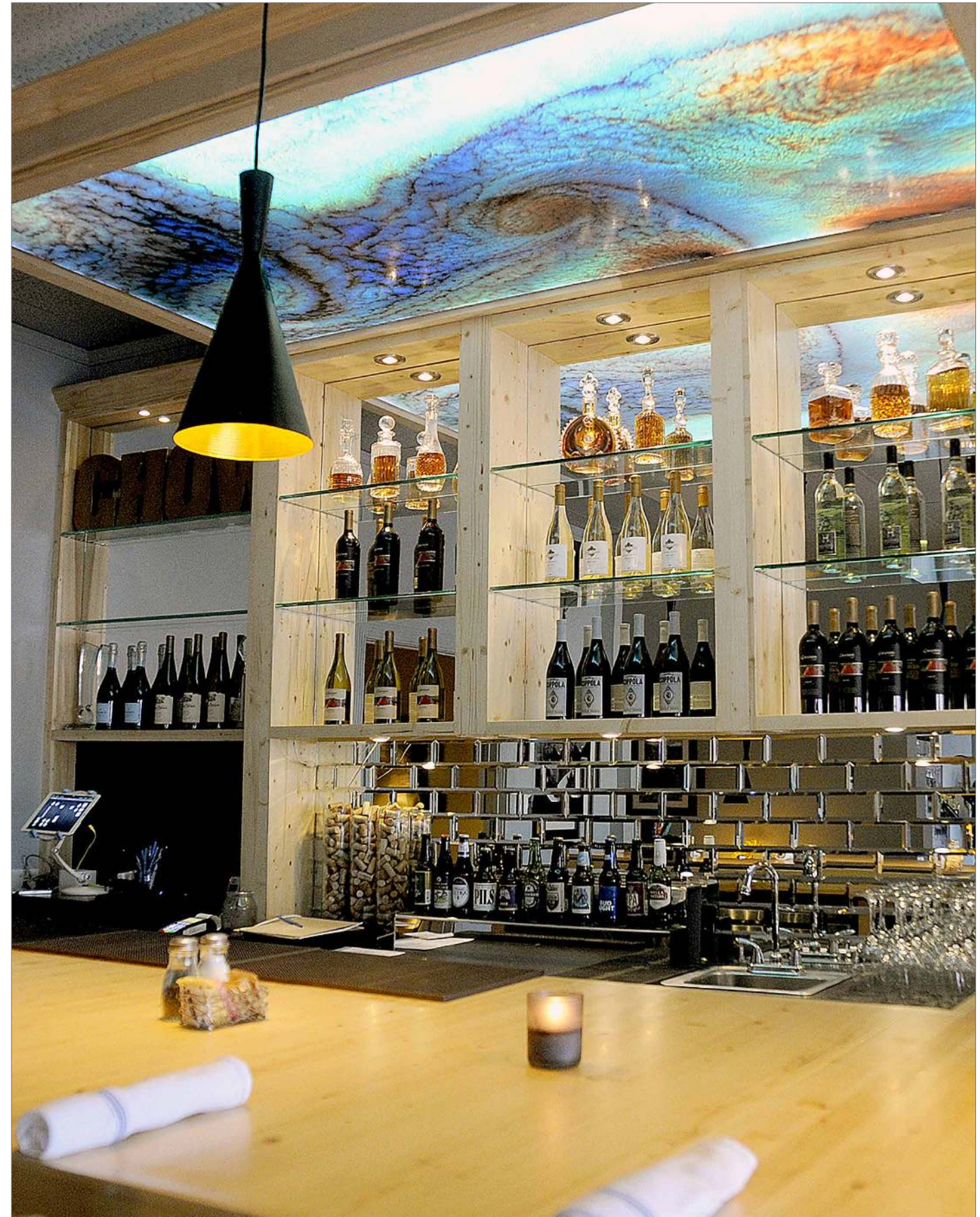
Ultra Thin 

Vertical and Horizontal Applications 

Photorealistic Art 

Available in Kit Form Multiple 

Frame Options 



Backsplashes & Islands

Enhance the Space with Ambient + Task Lighting

LumiSplash backsplashes and islands help enhance new or existing kitchen designs while adding decorative light. It is simple to trim to size, cut out outlets, and more at the jobsite without affecting luminance.

Using photography or art, you can create a one-of-a-kind look with LumiSplash that brings the image to life.








Day



Night

Features

- Hundreds of Design 
- Options Impact Resistant 
- Abrasion Resistant 
- Chemical Resistant 
- Stain Resistant 



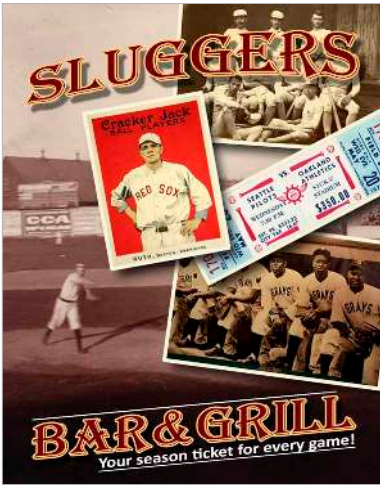
Interchangeable Graphics & Signage

Changing Seasons & Events

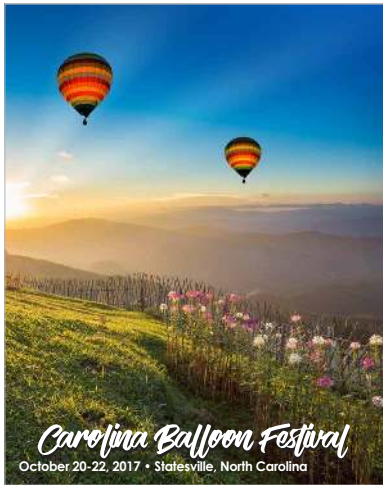
LumiSplash's Interchangeable Graphic Panels can easily be removed and replaced with new designs making it possible to change out looks as season, mood, or design preferences change.

While ATI's own creative Idea Library is available, we invite you to work with your ATI sales associate to discuss your vision and have a custom LumiSplash design created for your next project.

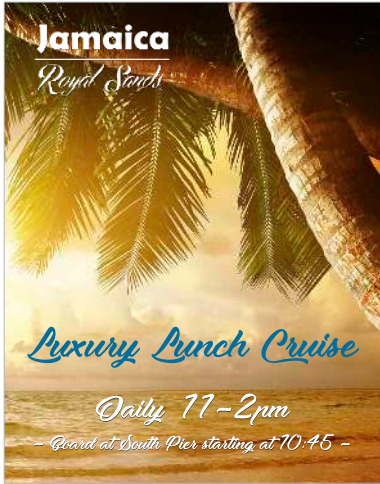
On the opposite page, the homeowner installed a photographic 32" x 42" LumiSplash panel to help complete the design of her basement wine cellar. Her contractor designed the custom wood frame over the buffet. Not only does the luminance create the desired ambiance, she can also change out the graphics quickly and easily to refresh the décor.



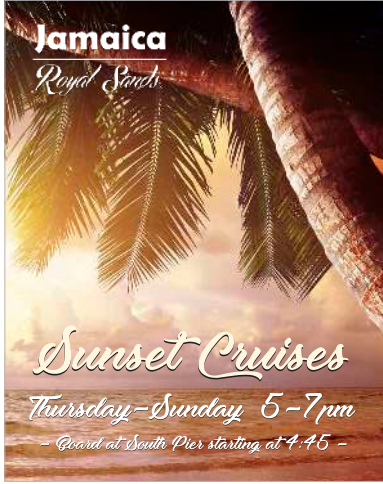
Custom Logo
Restaurant Entrance



Seasonal Event
Hotel or Visitors' Center Lobby



Seasonal Graphics
Resort Check-in Lobby



Seasonal Graphics
Resort Elevator



Customer supplied art



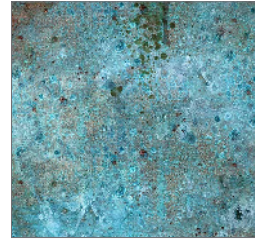
Additional images available with Interchangeable Graphics Panel

Features

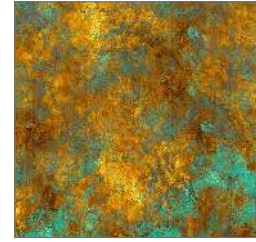
- Hundreds of Design Options 
- Ultra Thin 
- Vertical and Horizontal Applications 
- Photorealistic Art 
- Available in Kit Form 
- Multiple Frame Options 

Idea Library

Metal



Funky Cold Patina



Native Patina

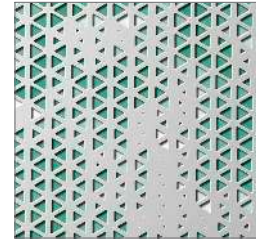


Heavy Gears

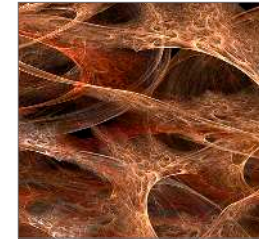
Modern



Nebula Pavo



Die-Cut on Seafoam

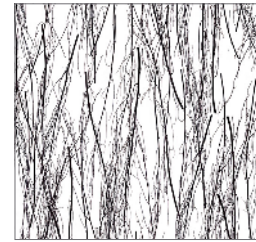


Odyssey Blaze

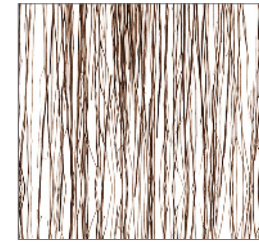
Organic



Ginkgo Reeds
Green and Yellow



Birch



Twigs

Stone & Tile



Blanco



Geodes Natural



Sedona

Wood



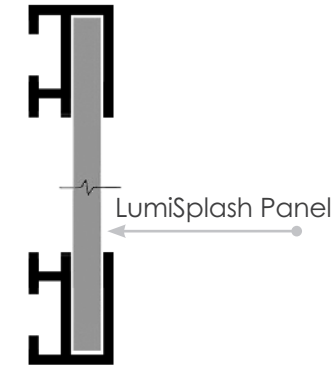
Log Ends



Cherry Dark Chopsticks

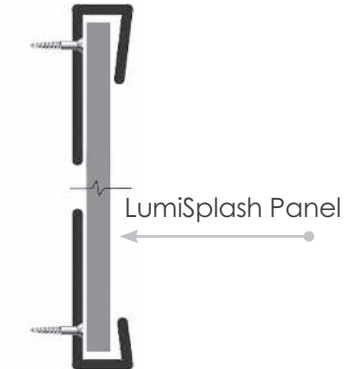


Walnut Burl Medium



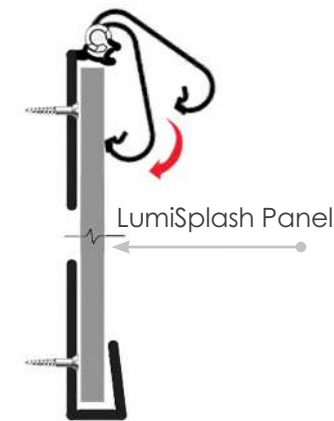
Slim Frame

- Easy to assemble or disassemble in field
- Frame mounted to wall with Z clip and locking T screws
- Use 4-sided mitered
- Use on 4 sides



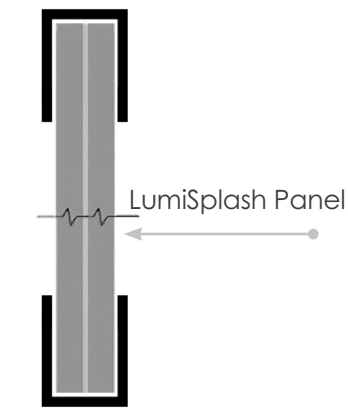
J Channel Top + J Channel Bottom

- Upper and lower mounts screw to wall
- Easy to change art
- Customer provides left and right side molding
- Size limit in height to 24"



Snap Frame Top + J Channel Bottom

- Upper and lower mounts screw to wall
- Easy to change art
- Snap Frame molding hides under cabinets, making it ideal for backsplashes
- Can be used on its own for 1, 2, or 4 sides



U Channel for Double-Sided

- Available in standard sizes of 24" x 48" and 24" x 96"
- Panel system mounts into customer provided onsite frame requiring a .75" channel

Framing Options

▶ Check ATILaminates.com for updated technical information and installation videos for LumiSplash products.

View our entire Idea Library at ATILaminates.com/LumiSplash. Looking for something different? Let our design team create custom artwork, or send us your own!

Art Requirement FAQs

ATI is committed to helping you with your LumiSplash project. Please contact us if you have any questions or are unsure about our art requirements.

I want to submit my own photo(s)/ile(s), what size and resolution should it/they be?

Ideally, your photo/file should be a full size image at a native resolution of 300 ppi or minimum 150 ppi. If you do not have these file sizes, please send what you have and we will evaluate the image and determine if it is suitable for your needs. Depending on substrate and function, you may be very happy with the quality achieved with a less than perfect image. LumiSplash can be a very forgiving process and we have worked with many files that fall way below any sort of conventional resolution standards with good results.

My photo might need some "photoshopping;" can you guys do that?

Yes, we can photoshop images to make them look their best for your project with an additional charge. Keep in mind that a higher resolution does not always equal higher quality. An example of this is when a photo is taken in low light. Digital cameras tend to create "noise" via random speckles of off color when there should be none. It is much easier to manipulate and "fix" a lower resolution photo that is shot well than to "fix" a photo with high resolution that is poorly shot.

What file formats do you accept?

We accept all common raster and vector image formats. Common raster formats include: TIFF, JPG, PNG, PSD (Adobe Photoshop), etc. Common vector formats include: AI (Adobe Illustrator), EPS, and SVG. We also accept PDF's, but they can contain any number of different raster and vector formats within the PDF "wrapper," so it is important to understand what is included in the PDF file.

Does my file have to have bleeds?

Yes. It is very difficult to perfectly match an image to the exact size of a substrate in a moving printer/press where heat expands the substrate. For this reason, all images for production need to include bleed. The amount of bleed can vary, but we prefer to have .25" (1/4 inch) of bleed on all edges. A .50" (1/2 inch) of bleed may be requested for projects that require precise cutting. If you didn't build in a bleed on your file, don't worry; we can help you with your project! Call us and we'll connect you with a Fusion specialist.

Should my files be RGB or CMYK?

RGB files naturally have a broader range of available colors than the CMYK color space. RGB files will allow us to produce the most vibrant and detailed print possible.

I want to color match an existing item that I have. Can you guys color match?

For PMS color matches, please provide us with the Pantone number and we will approximate it as closely as possible. We can also match various paint chips, corporate logos, and a variety of other sources.

My photo/file has text. What size should the font be?

The smallest optimum size for fonts is 12 point. Some fonts require a larger point size or bolding, especially if reverse copy is needed. Due to the thousands of existing fonts, keep in mind that we may not have the requested font in-house. Please provide type as "outlines" so that type conversion issues are avoided.

Do you have cleaning and care information available?

Yes! Please see the Technical Specs on our website at ATILaminates.com/Resources.

Client Satisfaction & Quality

Reference should be LumiSplash produced by ATI Decorative Laminates

Size

Frame

Art or Graphic Name

Electrical Cord location/power exit

Type of installation- Wall or Tabletop

Frames + Moldings

Due to LumiSplash's ultra-thin, multi-layered laminate construction, it is necessary to encapsulate its edges with frames or moldings. Heat dissipation is also necessary for LED longevity, ATI's LumiSplash has heat dissipation built in. ATI offers various edging and framing solutions that provide the proper aesthetic and technical solution for most applications.

Customers may consider picture frames, wood, solid surfacing, leather, and other moldings to add design appeal to tables, wall art, backsplashes, and countertops. Working with ATI technical staff will ensure that custom solutions meet all of LumiSplash's requirements.

Consultation + Technical Review

Due to the custom nature of LumiSplash, every project begins with a conversation. We are able to provide recommendations and help identify solutions that would be best for your project.

Graphic Selection

Not all images are created equal. The right image paired with your LumiSplash system can capture attention and add new dimension to your design. You may provide your own print-ready art, choose from our existing art library or provide material for our in-house graphics specialist to build upon.

Design + Sampling

At this stage, our designers and production staff optimize files for printing and final output. You will receive samples to reflect image quality, substrate nuances, and color. It's important to look at image details critically against any light source, with an eye on how the sample will look both lit and unlit.

Fabrication + Installation


It's now time to make your concept a reality. Once we receive the green light to proceed, we print your graphics on diffuser material and assemble the components of your LumiSplash kit. You will receive a carefully packed shipment via common courier with basic instructions for installation.

Conditions and Warranty

ATI Decorative Laminates warrants to the original consumer purchaser for one (1) year after date of purchase that, under normal use and service, MiroFlex™, Fusion, NuMetal™, and LumiSplash™ products are free from manufacturing defects and conform to published specifications. This warranty applies as long as the consumer purchaser and/or installer follows ATI's installation instructions (methods), which also includes using recommended adhesives, when adhering ATI's products to recommended surfaces. ATI Decorative Laminates' products are intended for primarily interior applications.

ATI Decorative Laminates believes all information contained herein to be correct. It is the responsibility of the fabricator/customer to completely test the adhesives and methods of fabrication to ensure that the results are satisfactory. The seller's only obligation will be to replace product on a one-to-one basis in the event it is covered under the above warranty. ATI is not responsible for any fabrication, ancillary, or labor costs involved with using its products. Neither the manufacturer nor the seller shall be liable for any additional damage or loss, directly or indirectly, arising as a result of using its products.

Slight imperfections and color variations can occur and are considered normal. Please inspect each product carefully before fabrication to ensure it meets your needs.

Visit our YouTube Channel,  [YouTube.com/MirroFlex](https://www.youtube.com/MirroFlex), to learn more about ATI's Shipping Procedures

Items shown as concept 



surface materials

The ultimate in interior finish products.

(440) 248-0000

6655 parkland boulevard
solon, ohio 44139
(440) 519-1950 fax
www.surfacematerials.com